

# Quantifying Racial/Ethnic Diversity at the CSU

Philip Garcia  
Matthew Case

CSU Office of the Chancellor  
Analytic Studies Division

39<sup>th</sup> CAIR Annual Conference | San Diego, CA  
November 20, 2014

# Definitions

In demography, a **diversity index** is a quantitative measure that reflects

- **how many** different groups ( $R$ ) there are in a population, and
- takes into account how **evenly** individuals in the population are distributed across those groups.

For a given number of groups, the value of a diversity index is maximized when all groups are equal in size.

# Common Usage

- Provide **summative measures** of diversity when there are more than two groups
- Diversity Rankings (US News, Chronicle)
- Many other applications (Ecology/Biodiversity, Demography, Economics, Law, etc)

# Context: New CSU

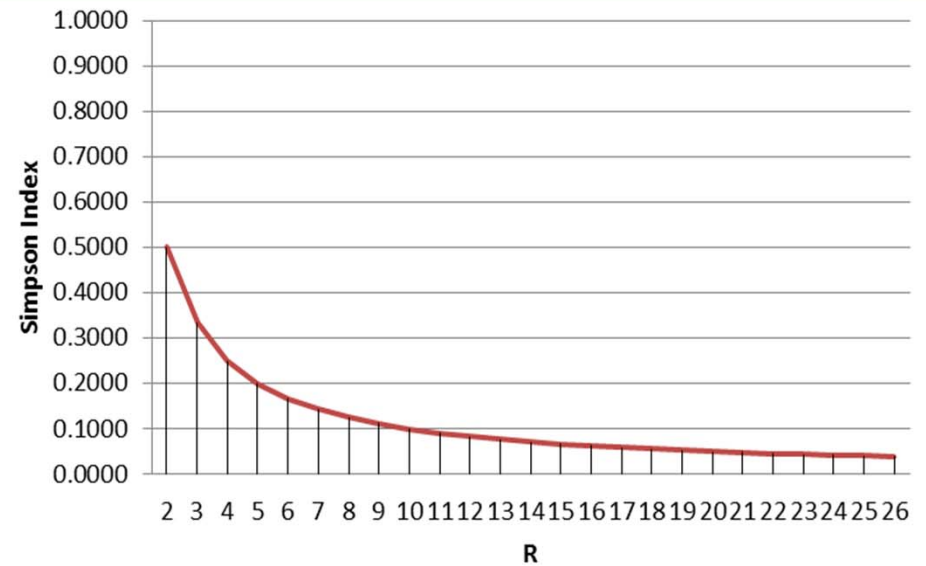
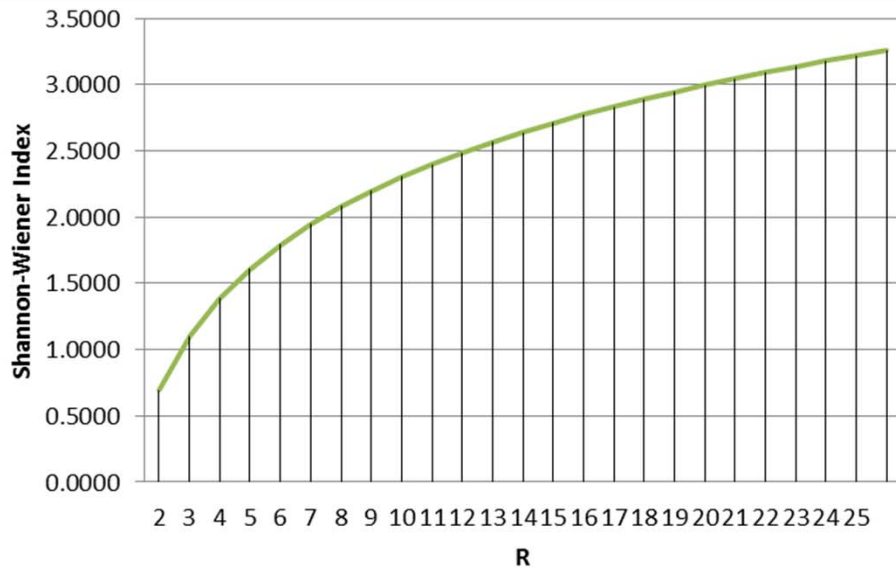
## Racial/Ethnic Data Collection

- Collected via online application (2009-present)
- Provides 113 separate options for self-identification

Latino	White	Black	Asian	AI/AN	NH/PI
23	4	4	25	33	24

- Benefits
  - Students are less likely to misidentify or decline to identify themselves
  - “Other students” is less likely to be a modal response
  - Greater “richness” in the collection

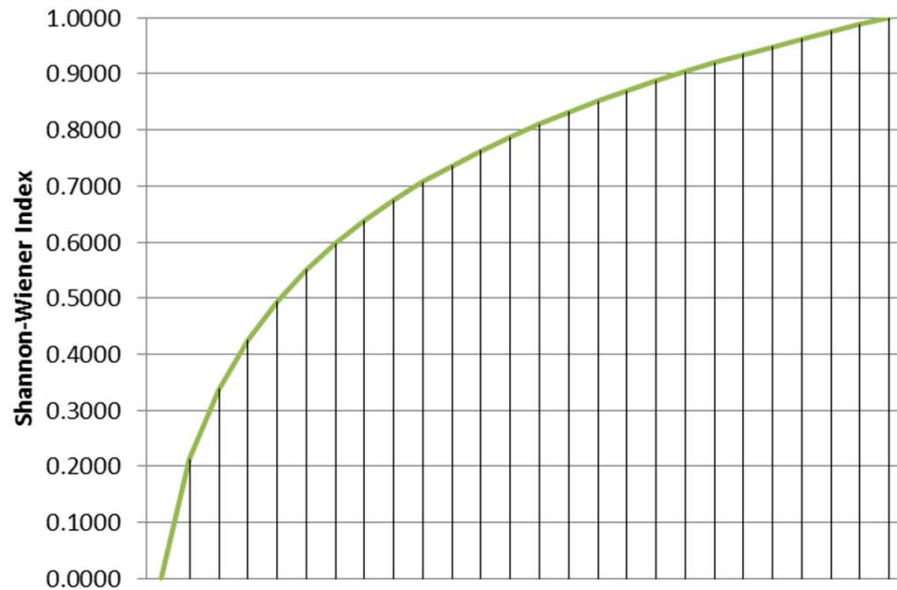
# The Affect of R on Two Diversity Indices



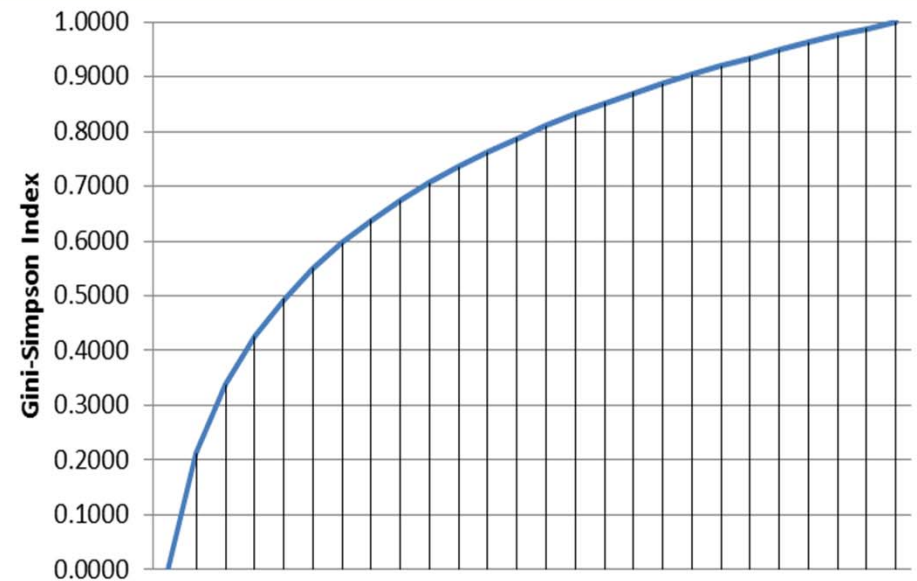
Heterogeneity  
(Entropy)

Homogeneity  
( $\lambda$ )

# The Range for Two Heterogeneity Indices



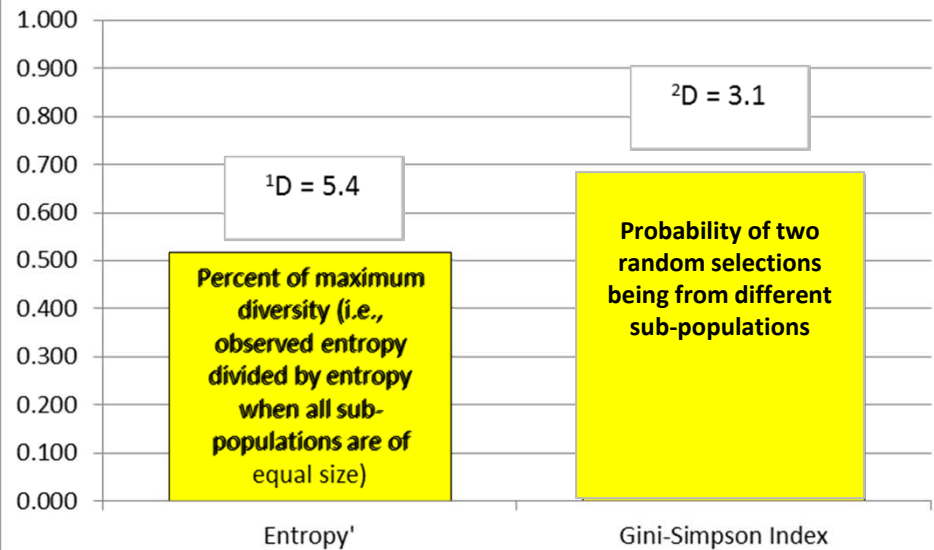
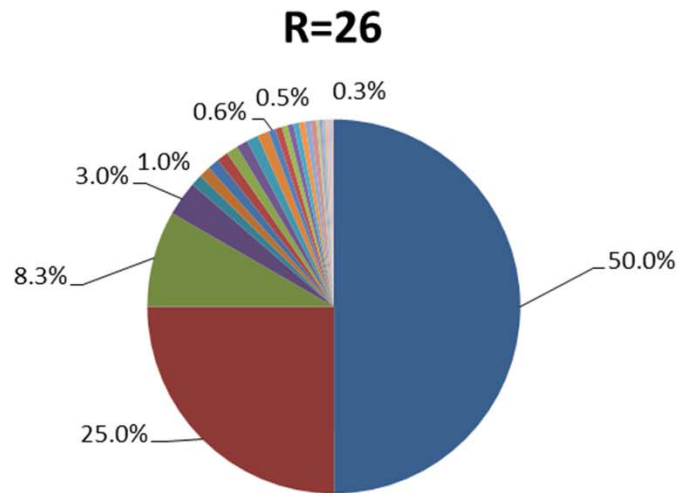
Entropy' (Re-scaled)



Gini-Simpson



# Summary Indices for a Hypothetical Population

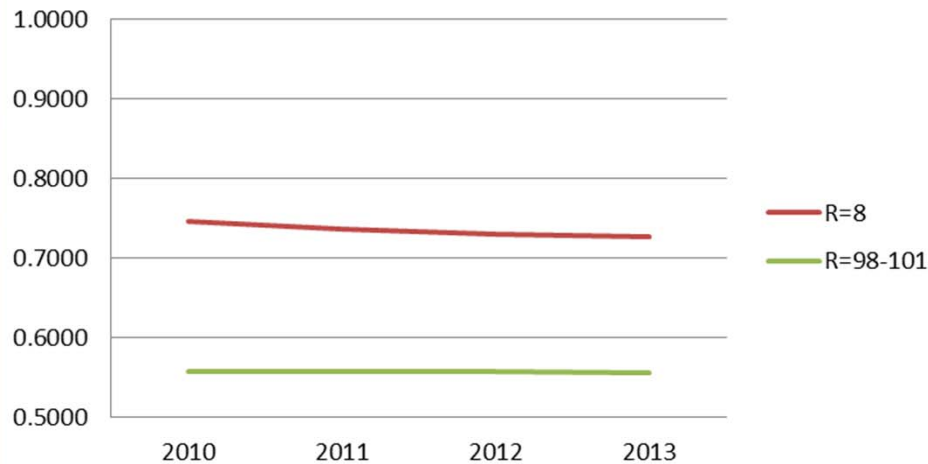


Population Distribution

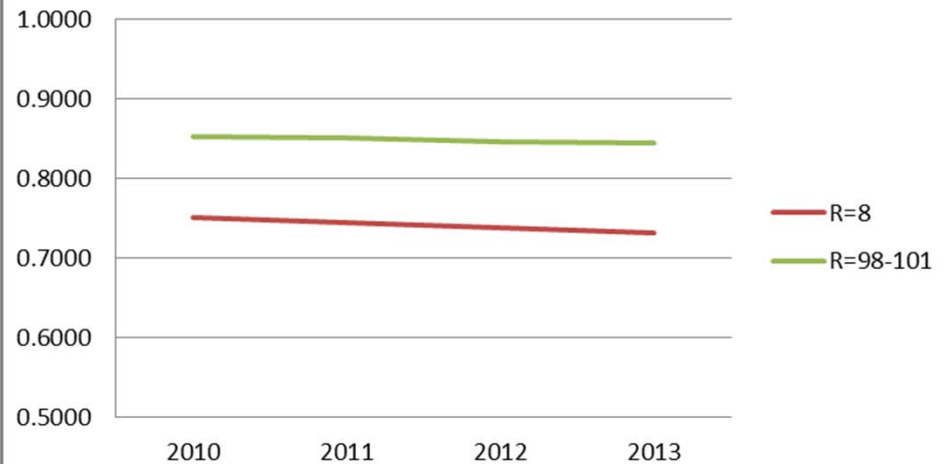
Observed Diversity

# Undergraduate Diversity at the CSU

## Entropy'



## Gini-Simpson Index

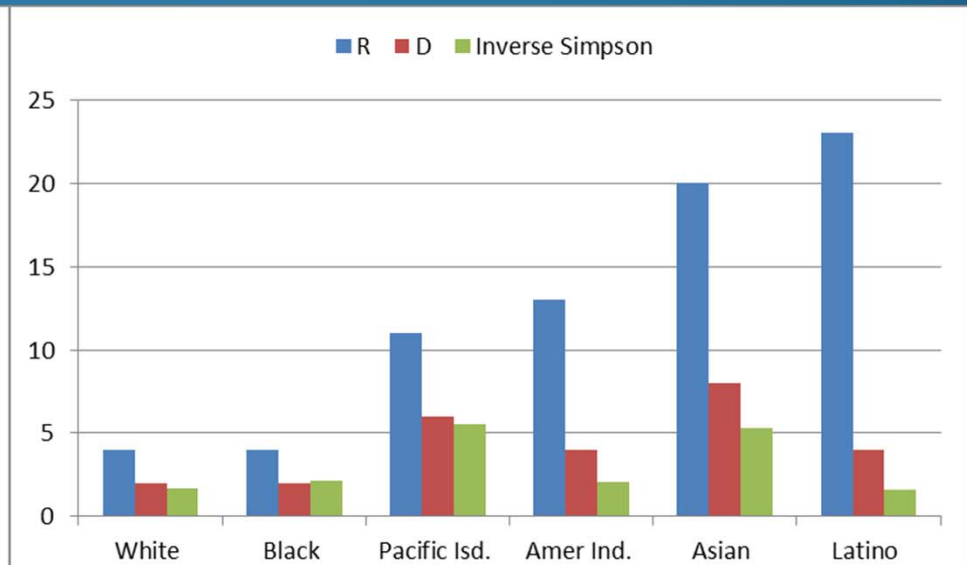
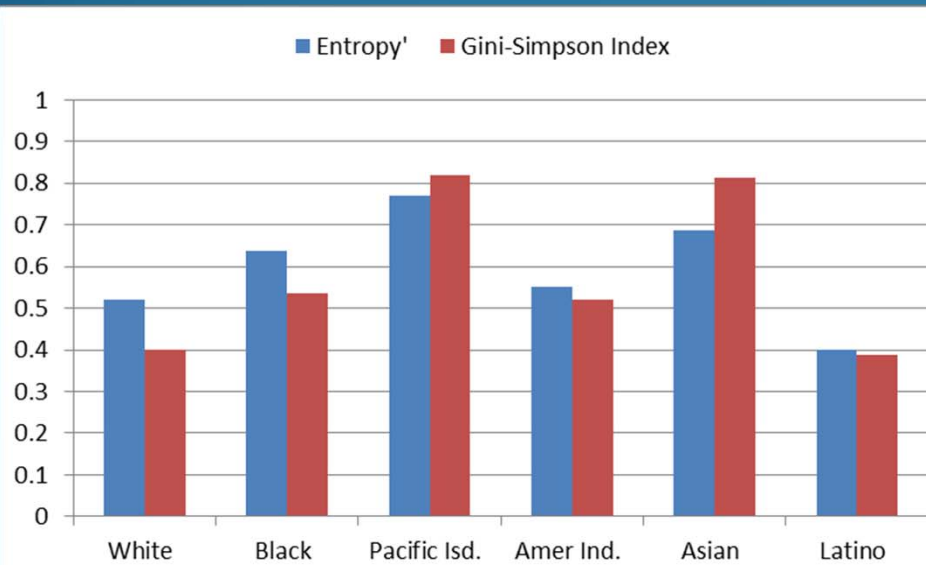


$H'$  > reward for evenness

$1-\lambda$  > reward for richness



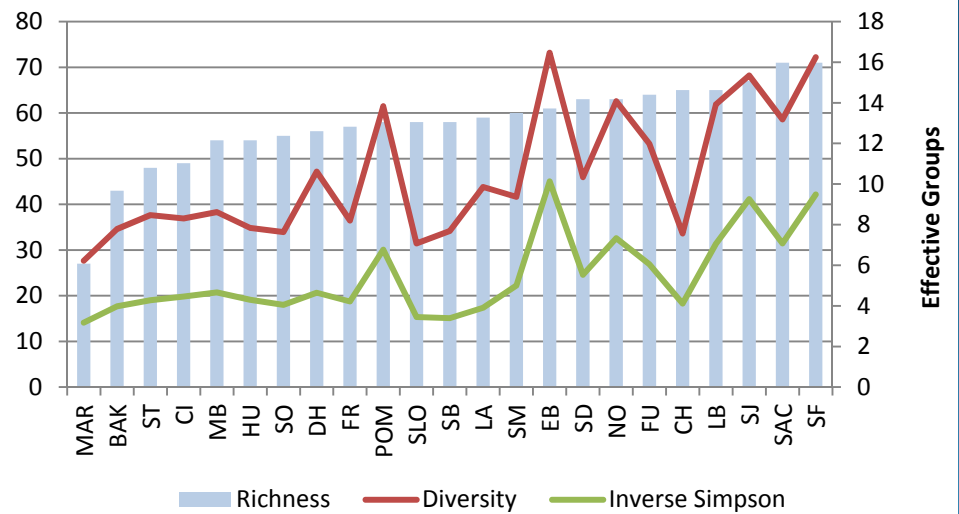
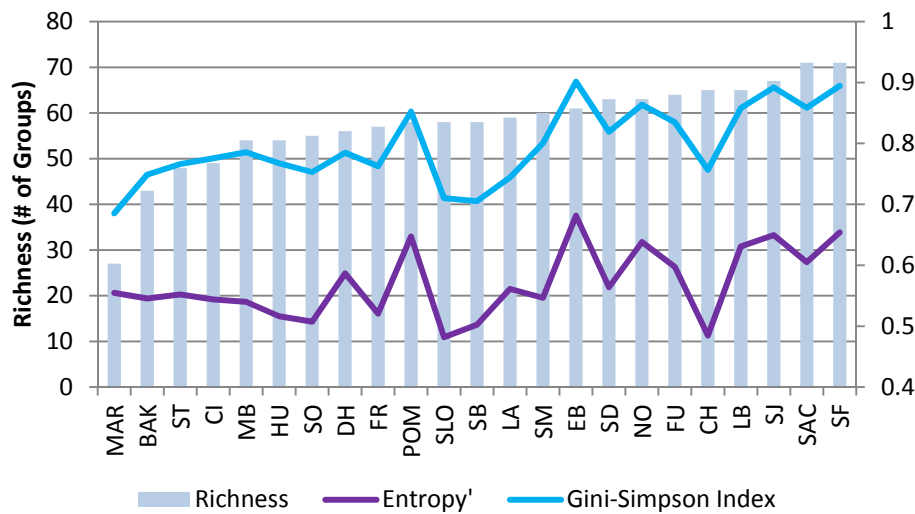
# Undergraduate Intra-group Diversity at the CSU



Observed Diversity

“True” Diversity

# Diversity Across Campuses

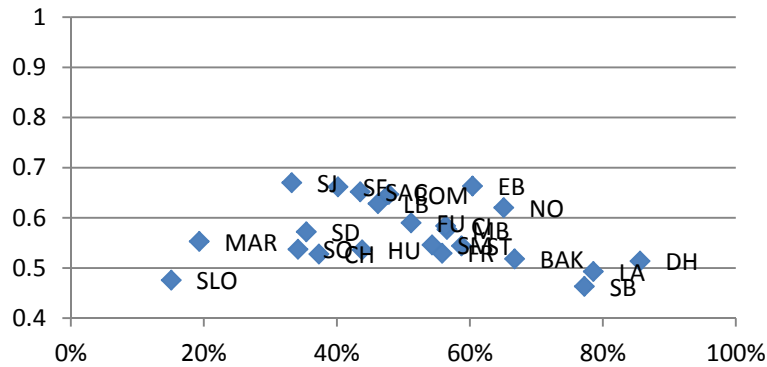


# Diversity by %URM

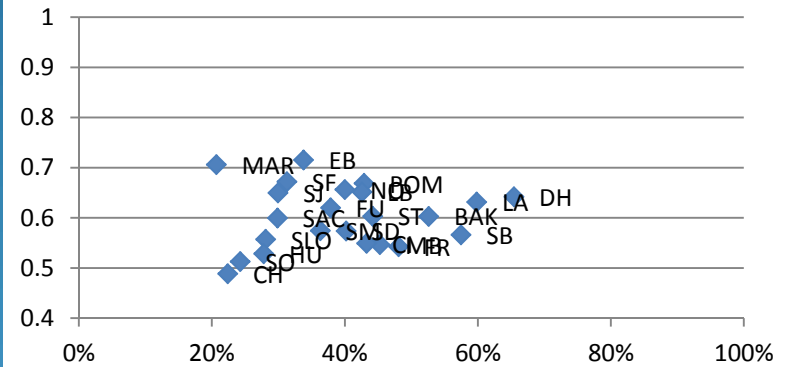
First Time Freshmen

Undergrad Transfers

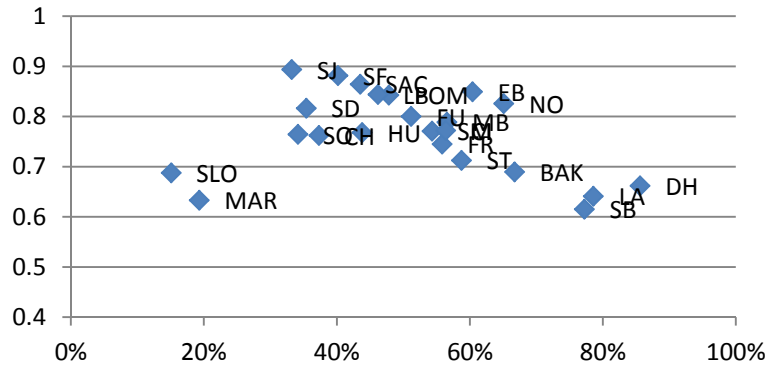
Entropy'



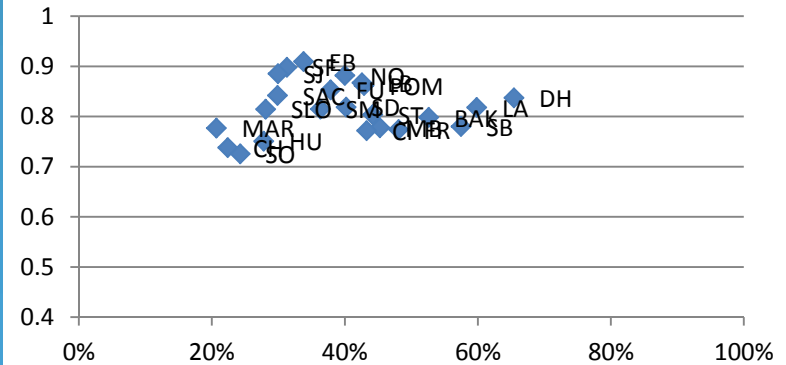
Entropy'



Gini-Simpson

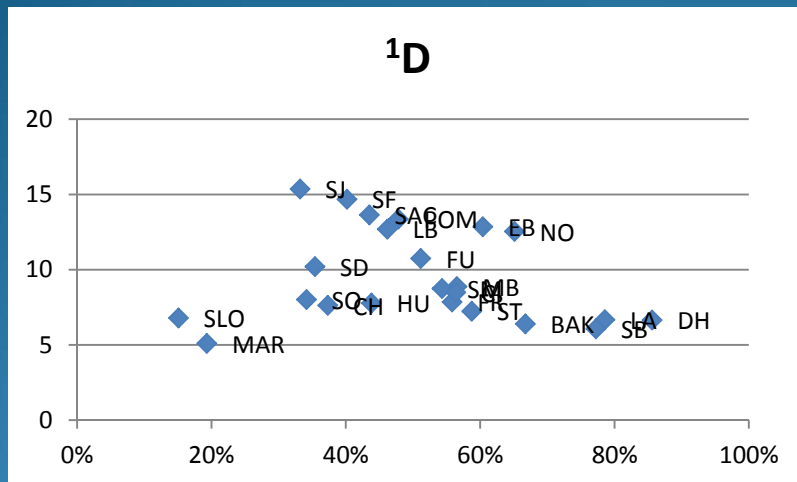


Gini-Simpson

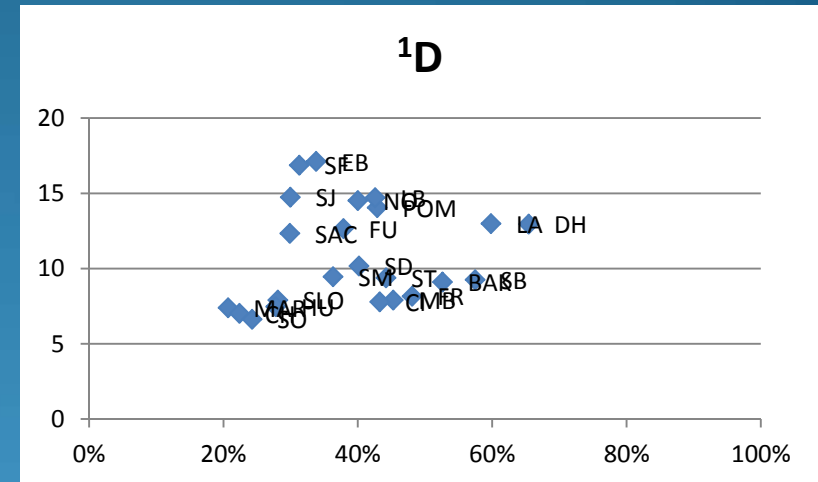


# Diversity by %URM

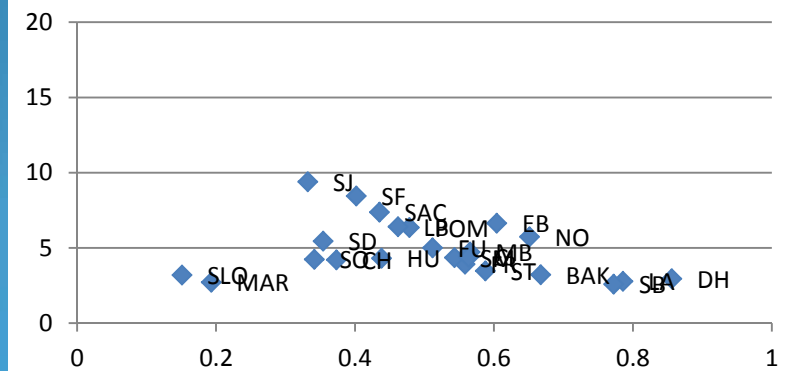
## First Time Freshmen



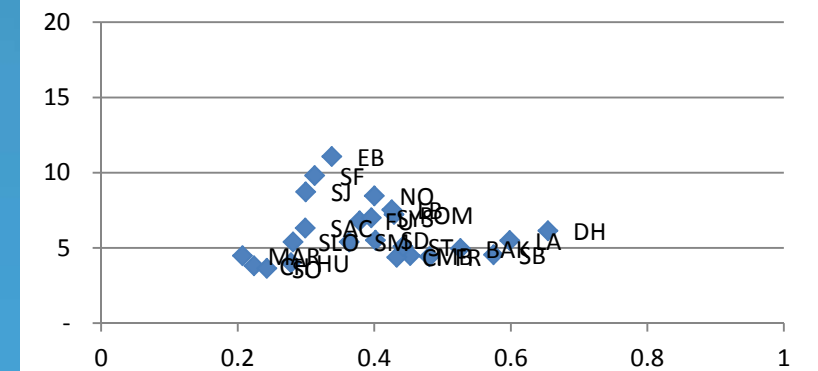
## Undergrad Transfers



## Inverse Simpson



## Inverse Simpson



# Takeaways

- Diversity indices are being calculated for your institution from public data
- Richness “tradeoffs”
- Shannon’s entropy could be considered a fairer measure of diversity as it relies directly on observed relative frequencies without favoring rare or common groups

# Future Directions

- Extensions to ethnic/race indices
  - Gender
  - Pell
- Other indices
  - Country of Origin/Language
  - Socioeconomic Status
  - Discipline/Major
- Other populations (Faculty, K-12 “pipeline”, CA pop)



# THANK YOU

Philip Garcia  
Matthew Case

Analytic Studies Division  
CSU Office of the Chancellor

[pgarcia@calstate.edu](mailto:pgarcia@calstate.edu)

[mcase@calstate.edu](mailto:mcase@calstate.edu)

[Website: www.calstate.edu/as](http://www.calstate.edu/as)