

Shaken & Stirred

Depressed Conditions and New Engagements for Institutional Research

Bob Cox – UCLA

with special guest

Van Novack – Cal State Long Beach

California Association for Institutional Research
November 20, 2009 Sacramento

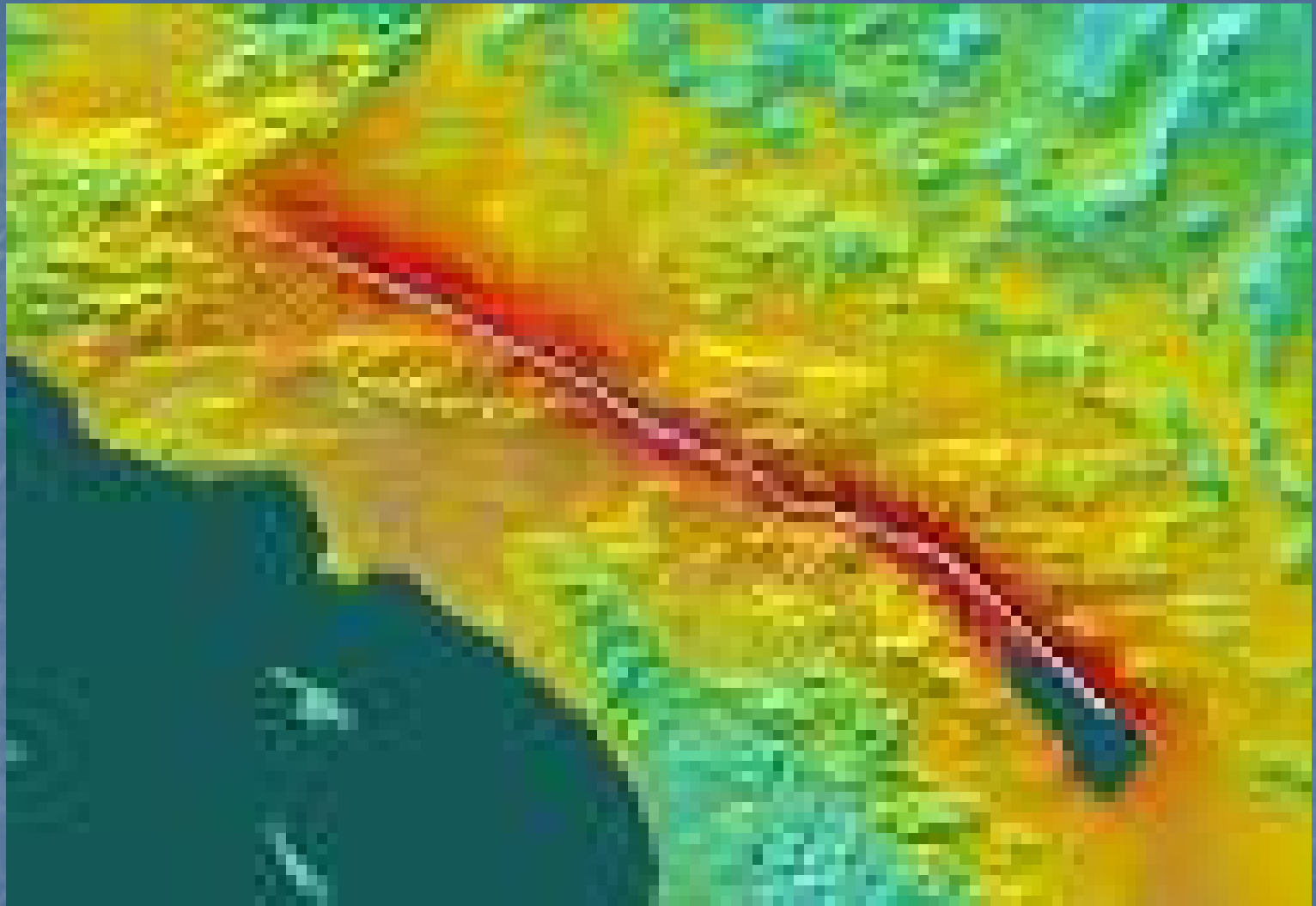
Contact: rcox@ponet.ucla.edu

California's San Andreas Fault



Map copyright © 2006 David K. Lynch







2012



© 2009 Sony Pictures Digital Inc. All Rights Reserved.

AND IT CAME TO PASS IN THE 601ST YEAR, IN THE FIRST MONTH, ON THE FIRST DAY OF THE MONTH, THE WATERS DRIED UP FROM THE EARTH, AND NOAH TOOK OFF THE COVERING OF THE ARK, AND HE LOOKED, AND BEHOLD, THE FACE OF THE GROUND WAS DRY.



AND IN THE SECOND MONTH, ON THE TWENTY-SEVENTH DAY OF THE MONTH, THE EARTH WAS COMPLETELY DRY. AND GOD SPOKE TO NOAH, SAYING...

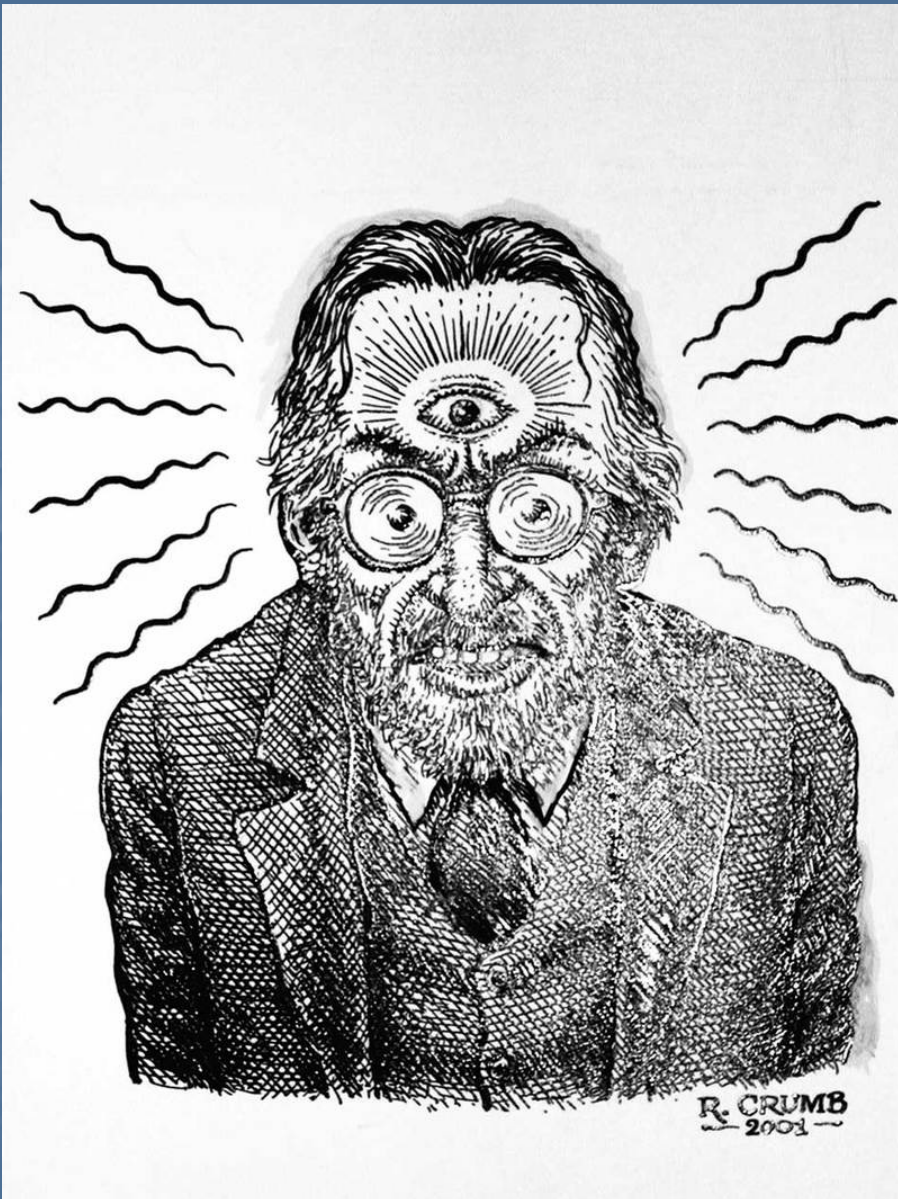
GO OUT OF THE ARK, YOU AND YOUR WIFE AND YOUR SONS AND YOUR SONS' WIVES WITH YOU.



ALL THE ANIMALS THAT ARE WITH YOU OF ALL FLESH, FOWL AND CATTLE AND EVERY CRAWLING THING THAT CRAWLS ON THE EARTH, TAKE OUT WITH YOU, AND LET THEM SWARM OVER THE EARTH AND BE FRUITFUL AND MULTIPLY ON THE EARTH.



AND NOAH WENT OUT, HIS SONS AND HIS WIFE AND HIS SONS' WIVES WITH HIM. EVERY BEAST, EVERY CRAWLING THING, AND EVERY FOWL, EVERYTHING THAT STIRS ON THE EARTH, BY THEIR FAMILIES, CAME OUT OF THE ARK.









First Signs - Spring 2007

- Problems with student access to “Writing II” classes
- College asks for course enrollment projections
- Class level push discovered ... trouble is real!
- Missing Link -- The “GE Seminar” requirement
- Too few “GE Seminar” classes
- Model retooled and refined ... train wreck ahead!
- College suspends “GE Seminar” requirement

Model XS.3 - Reqt Not in Force

99-00 00-01 01-02 02-03 03-04 04-05 05-06 06-07 07-08 08-09 09-10 10-11 11-12 12-13

Writing II Cohorts -- by Year of Entry	3,525	3,632	3,875	3,854	3,825	3,504	4,031	4,281	3,746	4,150	4,000	4,000	4,000	4,000
Writing II Enrollment Year 1	1,136	990	1,085	1,731	1,993	1,902	1,986	2,073	2,043	2,268	2,200	2,200	2,200	2,200
" " Year 2	1,241	1,377	1,766	1,672	1,550	1,211	1,201	1,403	1,574	2,285	2,144	2,144	2,144	2,144
" " Year 3	845	1,015	821	1,271	1,063	875	1,560	1,332	375	48	24	24	24	24
" " Year 4	401	425	328	1,150	1,256	1,314	1,164	428	315	21	20	20	20	20
" " Year 5+	140	140	105	328	362	241	112	146	48	21	20	20	20	20
" " Cohort Career Total	3,763	3,947	4,105	6,152	6,224	5,543	6,023	5,382	4,355	4,643	4,408	4,408	4,408	4,408

<i>Enrollment per 100 in Cohort Year 1</i>	32	27	28	45	52	54	49	48	55	55	55	55	55	55
" " Year 2	35	38	46	43	41	35	30	33	42	55	54	54	54	54
" " Year 3	24	28	21	33	28	25	39	31	10	1	1	1	1	1
" " Year 4	11	12	8	30	33	38	29	10	8	1	1	1	1	1
" " Year 5+	4	4	3	9	9	7	3	3	1	1	1	1	1	1
" " Cohort Career Total	107	109	106	160	162	159	150	125	117	112	110	110	110	110

Writing II Course Enrollment by Year

99-00 00-01 01-02 02-03 03-04 04-05 05-06 06-07 07-08 08-09 09-10 10-11 11-12 12-13

Enrollment from HS Access Cohort in 1st Year	1,136	990	1,085	1,731	1,993	1,902	1,986	2,073	2,043	2,268	2,200	2,200	2,200	2,200
" " 2nd Year	908	1,241	1,377	1,766	1,672	1,550	1,211	1,201	1,403	1,574	2,285	2,144	2,144	2,144
" " 3rd Year	401	555	845	1,015	821	1,271	1,063	875	1,560	1,332	375	48	24	24
" " 4th Year	142	204	308	401	425	328	1,150	1,256	1,314	1,164	428	315	21	20
" " 5th Year +	51	64	101	135	140	140	105	328	362	241	112	146	48	21
Enrollment by Year from HS Access Cohorts	2,638	3,054	3,716	5,048	5,051	5,191	5,515	5,733	6,682	6,579	5,400	4,853	4,437	4,409
Enrollment by Year from Transfer Cohorts	500	556	537	559	721	603	593	633	659	631	625	625	625	625
Total Writing II Enrollment by Year	3,138	3,610	4,253	5,607	5,772	5,794	6,108	6,366	7,341	7,210	6,025	5,478	5,062	5,034
Change from Year to Year	-	472	643	1,354	165	22	314	258	975	(131)	(1,185)	(547)	(416)	(28)

<i>% Enrollment from HS Access Cohort in 1st Year</i>	36	27	26	31	35	33	33	33	28	31	37	40	43	44
" " 2nd Year	29	34	32	31	29	27	20	19	19	22	38	39	42	43
" " 3rd Year	13	15	20	18	14	22	17	14	21	18	6	1	0	0
" " 4th Year	5	6	7	7	7	6	19	20	18	16	7	6	0	0
" " 5th Year +	2	2	2	2	2	2	2	5	5	3	2	3	1	0
<i>% Enrollment from HS Access Cohorts</i>	84	85	87	90	88	90	90	90	91	91	90	89	88	88
<i>% "Non-Required" HS Access Enrollment</i>				8	15	16	34	19	9	8	10	11	12	12
<i>% Transfer Cohort Enrollment</i>				10	12	10	10	10	9	9	10	11	12	12
<i>% "Non-Required" HS + Transfer Enrollment</i>				18	27	26	44	29	18	17	20	22	24	24

Images of Stability and Progress

- Long-run time series data show remarkable consistency and steady improvement in undergraduate outcomes
- Graduation rates for students entering from high school and via transfer access pushing higher year by year
 - Graduation rates at normative times much improved
 - Better than 90% finally graduate
- Average time-to-degree improving year by year
- Maintaining institutional performance at this level is a top-priority item for UCLA

UCLA Undergraduate Persistence and Graduation to Fall 2009
24 Fall Cohorts -- Entering from High School -- 1985-2008

Entering Fall Qtr	Cohort Size	Percent Registered					Percent Graduated				
		2nd Fall	3rd Fall	4th Fall	5th Fall	6th Fall	within 3 Yrs	within 4 Yrs	within 5 Yrs	within 6 Yrs	by Fall 09
All Students Entering UCLA via Direct Access from High School											
Fall 85	3,994	91.3	81.9	78.2	51.7	11.3	0.6	25.6	65.0	72.4	77.0
Fall 86	3,940	92.3	84.1	81.3	54.8	11.4	0.4	25.6	68.4	76.3	80.9
Fall 87	4,438	92.3	85.6	82.2	53.2	10.0	0.4	28.6	71.2	78.5	81.9
Fall 88	3,788	93.8	85.9	82.8	49.3	9.0	0.7	33.5	73.1	79.2	82.7
Fall 89	4,022	93.6	86.7	84.1	46.9	7.8	0.9	36.9	74.6	79.9	83.5
Fall 90	3,555	93.7	87.8	84.6	48.8	9.2	1.4	35.4	73.5	79.8	83.5
Fall 91	3,922	94.2	89.3	84.8	46.8	9.2	1.5	39.0	75.5	81.9	85.4
Fall 92	3,412	93.8	88.5	83.6	45.9	8.0	2.1	38.3	74.2	79.6	83.1
Fall 93	3,388	94.1	88.4	85.2	46.3	8.6	1.6	39.2	75.6	81.6	85.1
Fall 94	4,126	94.4	89.4	86.0	44.6	7.3	1.4	40.7	77.1	82.1	85.6
Fall 95	3,702	95.3	89.8	86.6	43.1	6.8	1.9	44.1	79.1	84.4	87.3
Fall 96	3,821	95.2	89.5	87.3	40.9	6.6	1.8	47.1	81.0	85.8	88.5
Fall 97	3,811	96.1	90.7	88.1	37.3	4.5	2.5	53.1	84.9	88.3	90.1
Fall 98	4,200	96.5	90.4	88.0	32.8	4.7	3.0	57.3	85.5	88.6	90.5
Fall 99	4,128	96.3	90.7	88.1	33.5	4.0	2.7	57.0	85.9	88.5	90.0
Fall 00	4,203	96.8	91.0	88.1	31.6	4.0	3.6	59.4	87.0	89.9	91.1
Fall 01	4,245	96.4	91.9	88.6	24.9	2.1	3.9	66.5	89.1	90.8	91.5
Fall 02	4,257	96.4	90.8	88.1	25.8	2.6	3.3	65.0	87.8	89.5	90.3
Fall 03	4,269	96.5	90.5	88.4	23.7	2.0	3.2	67.2	87.8	89.0	
Fall 04	3,720	96.6	91.2	88.2	21.5	2.1	3.5	69.4	87.4		
Fall 05	4,423	96.7	91.5	89.0	22.5		3.2	67.2			
Fall 06	4,810	97.1	92.5	90.3			2.5				
Fall 07	4,563	96.7	92.2								
Fall 08	4,733	96.5									

The latest graduation rates (boldface) are minimum values based on degrees recorded through mid-October 2009. When degree records are complete these rates normally increase by one or two percentage points on average.

**Time-to-Degree and Selected Performance Metrics for
UCLA Baccalaureate Degree Recipients Who ENTERED FROM HIGH SCHOOL
19 Degree-Year Cohorts - 1990-91 to 2008-09**

Degree Year	Number of Graduates	Average Quarters Elapsed	Average Quarters Registered	Average Quarters Completed	Percentage Distribution by Number of Quarters Registered at UCLA					Avg. Total Units on Transcript	Avg. Total Non-UC Units	Avg. Total UC Units	Avg. UC Units per Registered Quarter	Average UC GPA
					< = 12	13	14	15	> 15					
1990-91	3,297	13.86	13.53	13.30	40.9	10.1	13.2	26.8	9.0	191.5	14.2	177.3	13.1	3.09
1991-92	3,610	13.97	13.61	13.37	37.8	11.8	13.7	27.1	9.6	193.7	15.0	178.7	13.1	3.11
1992-93	3,513	13.75	13.37	13.15	46.3	10.6	11.4	22.0	9.7	194.7	16.8	177.9	13.3	3.13
1993-94	3,206	13.83	13.39	13.19	42.9	11.9	13.8	23.1	8.4	195.7	16.9	178.8	13.4	3.13
1994-95	3,286	13.67	13.23	13.03	49.8	9.6	10.2	22.9	7.5	197.4	18.5	178.9	13.5	3.16
1995-96	3,142	13.81	13.40	13.21	44.4	10.4	11.4	24.9	8.9	199.5	18.0	181.5	13.5	3.14
1996-97	3,082	13.74	13.28	13.12	49.2	8.3	9.5	24.0	9.1	200.6	19.3	181.3	13.7	3.14
1997-98	3,383	13.52	13.09	12.95	54.0	8.6	9.5	20.8	7.1	200.2	20.4	179.8	13.7	3.16
1998-99	3,667	13.71	13.18	13.05	51.2	8.3	9.7	23.4	7.4	200.6	20.1	180.5	13.7	3.16
1999-00	3,725	13.48	12.97	12.87	56.0	8.2	8.7	20.0	7.1	200.8	22.3	178.5	13.8	3.18
2000-01	4,043	13.33	12.80	12.70	59.0	8.3	9.0	17.9	5.8	201.5	24.6	176.9	13.8	3.17
2001-02	4,286	13.17	12.61	12.52	64.0	8.7	7.5	14.5	5.3	203.5	26.5	177.0	14.0	3.20
2002-03	3,979	13.14	12.60	12.52	64.0	8.8	8.7	14.2	4.2	208.0	27.4	180.6	14.3	3.25
2003-04	3,984	13.12	12.54	12.46	65.5	9.4	7.5	13.2	4.4	210.5	28.4	182.1	14.5	3.26
2004-05	4,225	13.03	12.47	12.39	68.4	8.8	7.2	12.1	3.5	213.3	29.4	183.9	14.7	3.25
2005-06	3,966	12.86	12.33	12.25	71.7	9.4	6.9	8.9	3.1	216.1	30.7	185.4	15.0	3.26
2006-07	4,078	12.78	12.25	12.15	73.6	10.0	6.5	7.8	2.1	215.8	32.0	183.8	15.0	3.26
2007-08	3,851	12.77	12.24	12.11	73.9	9.5	6.3	8.1	2.2	218.0	32.7	185.3	15.1	3.27
2008-09	3,974	12.68	12.14	12.06	79.1	8.0	5.2	5.4	2.2	217.0	32.5	184.5	15.2	3.29

UCLA Undergraduate Persistence and Graduation to Fall 2009
24 Fall Cohorts -- All Transfer Access – 1985-2008

Entering Fall Qtr	Cohort Size	Percent Registered			Percent Graduated			
		2nd Fall	3rd Fall	4th Fall	within 2 Yrs	within 3 Yrs	within 4 Yrs	by Fall 09
All Students Entering UCLA via Transfer Access								
Fall 85	1,690	87.0	62.6	18.8	19.0	60.1	73.4	78.8
Fall 86	1,463	85.6	61.4	18.7	18.3	59.5	72.5	77.6
Fall 87	1,764	86.0	60.9	15.9	18.6	63.1	74.6	79.6
Fall 88	1,785	87.3	63.7	15.1	19.3	65.7	76.8	80.6
Fall 89	1,795	88.4	60.9	14.3	22.2	66.8	77.5	81.0
Fall 90	1,927	90.1	57.7	10.6	26.6	72.6	80.0	83.1
Fall 91	2,123	89.2	53.2	10.9	32.8	72.0	79.5	83.1
Fall 92	1,987	90.5	48.4	10.8	36.8	73.5	81.1	84.7
Fall 93	2,178	91.8	50.8	11.7	35.9	73.8	81.6	85.8
Fall 94	2,218	92.2	51.7	11.8	35.1	73.3	82.1	85.4
Fall 95	2,181	93.1	49.2	9.3	39.5	76.9	83.5	86.4
Fall 96	2,104	93.2	48.7	10.5	40.4	76.7	84.4	88.0
Fall 97	1,946	93.2	48.3	10.4	40.5	76.9	84.2	87.9
Fall 98	1,871	93.7	45.4	8.1	44.4	81.1	87.6	89.9
Fall 99	2,246	93.0	45.5	8.4	43.9	80.5	86.7	89.1
Fall 00	2,264	95.0	41.8	6.3	49.7	84.1	89.4	91.1
Fall 01	2,410	95.3	41.4	5.5	51.1	85.7	89.7	91.9
Fall 02	2,246	94.3	37.3	5.0	53.7	85.9	90.1	91.7
Fall 03	3,243	94.1	32.7	4.7	58.0	85.8	89.5	90.8
Fall 04	3,047	94.7	31.8	4.2	59.7	87.0	90.1	90.7
Fall 05	3,137	94.7	34.4	4.3	57.0	85.9	89.0	
Fall 06	3,268	95.3	33.3	4.3	58.4	85.8		
Fall 07	3,307	94.5	34.3		54.7			
Fall 08	3,204	95.0						

The latest graduation rates (boldface) are minimum values based on degrees recorded through mid-October 2009. When degree records are complete these rates normally increase by one or two percentage points on average.

**Time-to-Degree and Selected Performance Metrics for
UCLA Baccalaureate Degree Recipients Who ENTERED VIA TRANSFER ACCESS
19 Degree-Year Cohorts - 1990-91 to 2008-09**

Degree Year	Number of Graduates	Average Quarters Elapsed	Average Quarters Registered	Average Quarters Completed	Percentage Distribution by Number of Quarters Registered at UCLA					Avg. Total Units on Transcript	Avg. Total Non-UC Units	Avg. Total UC Units	Avg. Total UC Units per Registered Quarter	Average UC GPA
					<= 6	7	8	9	> 9					
1990-91	1,943	8.68	8.30	8.10	24.0	15.1	14.2	26.3	20.4	199.3	79.4	119.9	14.4	3.02
1991-92	2,007	8.51	8.12	7.92	29.7	12.3	14.1	23.7	20.3	200.0	81.5	118.6	14.6	3.06
1992-93	2,380	8.30	7.99	7.81	33.2	16.1	12.8	19.3	18.6	197.7	83.8	113.8	14.3	3.09
1993-94	2,215	8.16	7.83	7.68	37.5	14.5	12.0	20.4	15.7	196.7	84.6	112.1	14.3	3.13
1994-95	2,195	8.08	7.71	7.55	40.8	13.9	11.0	17.4	16.9	196.4	87.7	108.7	14.1	3.15
1995-96	2,424	8.15	7.78	7.66	37.8	17.6	10.5	16.8	17.2	198.3	87.3	111.0	14.3	3.16
1996-97	2,470	8.21	7.76	7.64	39.5	15.3	11.1	18.0	16.2	199.1	89.9	109.2	14.1	3.14
1997-98	2,430	8.03	7.68	7.56	41.2	14.2	9.8	18.5	16.3	198.2	89.9	108.3	14.1	3.18
1998-99	2,274	8.23	7.77	7.65	40.1	15.4	10.0	18.4	16.0	198.6	91.4	107.2	13.8	3.18
1999-00	2,188	7.90	7.45	7.34	45.0	15.1	9.3	18.9	11.7	197.5	94.5	103.0	13.8	3.19
2000-01	2,363	7.59	7.23	7.15	50.1	15.3	8.9	15.8	9.9	196.1	95.0	101.1	14.0	3.20
2001-02	2,750	7.52	7.15	7.04	51.3	15.3	8.8	15.8	8.7	197.3	96.4	100.9	14.1	3.21
2002-03	2,811	7.47	7.03	6.92	54.6	12.4	11.5	13.8	7.8	197.8	97.3	100.5	14.3	3.19
2003-04	2,900	7.40	7.02	6.91	52.7	13.3	13.7	13.2	7.2	198.1	97.1	101.0	14.4	3.22
2004-05	3,148	7.13	6.76	6.68	63.2	9.6	11.3	11.0	4.9	196.9	97.5	99.4	14.7	3.25
2005-06	3,055	7.17	6.80	6.71	61.7	11.0	8.8	13.3	5.2	197.0	98.9	98.1	14.4	3.21
2006-07	2,910	7.11	6.73	6.62	64.6	10.8	7.7	12.2	4.8	195.1	100.5	94.6	14.1	3.24
2007-08	3,035	7.05	6.71	6.62	64.4	11.4	8.1	12.2	3.9	196.3	99.2	97.1	14.5	3.22
2008-09	3,111	7.05	6.71	6.62	63.5	12.0	8.4	12.0	4.2	196.2	98.9	97.3	14.5	3.26

Shaken - Summer 2008

- Financial news - cuts to academic unit budgets
- Enrollment news – projected 1,500 FTE over “budget”
- News from the Scheduling Office – cancelled classes
- News from Orientation – tight space at summer’s end
- **A Shocking Realization – for the first time in its history, UCLA may be at risk of entering a term in which there are not enough seats offered in classes to meet aggregate undergraduate demand**

Stirred - Summer 2008

- Step 1: Tapping into course scheduling system records of seats offered and seats filled in each and every undergraduate course on successive dates in advance of a future term
- A new data source for IR / Learning how to use it
- Step 2: Developing summary reports on the changing situation for campus leadership and detailed reports to managers responsible for course offerings
- Step 3: Projecting aggregate demand / Benchmarking proposed seat offerings against comparable past term seats offered and seats filled
- Managers use detailed reports to formulate temporary funding requests
- Funding distributed; most serious shortages and bottlenecks addressed

Seats Offered and Seats Filled in Undergraduate Primary Classes and Secondary Sections Fall 2006 to Fall 2009 Third-Week Finals

Third Week Finals	Primary Classes				Headcount Enrollment	Per Capita Rates			Average Seats per Section			
	Seats Offered	Seats Filled	Seats Open	% Open		Seats Offered	Seats Filled	Seats Open	Sections Offered	Seats Offered	Seats Filled	Seats Open
Fall 2006	97,275	85,276	11,441	11.8	25,338	3.84	3.37	0.47	1,734	56.1	49.2	6.9
Fall 2007	98,130	86,474	11,656	11.9	25,780	3.81	3.35	0.45	1,661	59.1	52.1	7.0
Fall 2008	97,797	88,377	9,420	9.6	26,334	3.71	3.36	0.36	1,635	59.8	54.1	5.8
Fall 2009	98,118	89,298	8,820	9.0	26,442	3.71	3.38	0.33	1,570	62.5	56.9	5.6
Fall 2009 vs. Fall 2008	321	921			108				(65)		2.8	

Third Week Finals	Secondary Sections				Headcount Enrollment	Per Capita Rates			Average Seats per Section			
	Seats Offered	Seats Filled	Seats Open	% Open		Seats Offered	Seats Filled	Seats Open	Sections Offered	Seats Offered	Seats Filled	Seats Open
Fall 2006	54,856	50,642	4,229	7.7	25,338	2.16	2.00	0.17	2,267	24.2	22.3	1.9
Fall 2007	57,385	52,492	4,893	8.5	25,780	2.23	2.04	0.19	2,338	24.5	22.5	2.1
Fall 2008	58,413	54,593	3,820	6.5	26,334	2.22	2.07	0.15	2,353	24.8	23.2	1.6
Fall 2009	59,810	56,249	3,561	6.0	26,442	2.26	2.13	0.13	2,311	25.9	24.3	1.5
Fall 2009 vs. Fall 2008	1,397	1,656			108				(42)		1.1	

Excluded from the framework of this analysis are courses operating without fixed schedules or definite enrollment capacities -- such as independent study courses, most off-campus courses, Honors Contract courses numbered 89HC and 189HC, Student Research Program tutorials numbered 99, and all courses numbered 195 and above. Nursing and ROTC courses are also excluded.

Seats Offered and Seats Filled in Undergraduate Primary Classes and Secondary Sections
Fall 2007 - Fall 2008 - Fall 2009 Third-Week Finals

	Primary Class Sections				Secondary Sections				Seats Offered				Seats Filled (Course Enrollments)			
	Fall 2007	Fall 2008	Fall 2009	09 Net vs. 08	Fall 2007	Fall 2008	Fall 2009	09 Net vs. 08	Fall 2007	Fall 2008	Fall 2009	09 Net vs. 08	Fall 2007	Fall 2008	Fall 2009	09 Net vs. 08
HUMANITIES	536	505	469	(36)	364	339	347	8	18,543	18,454	17,820	(634)	16,522	16,663	15,864	(799)
LIFE SCIENCES	138	120	133	13	291	350	309	(41)	12,079	11,553	12,114	561	11,100	10,701	11,366	665
PHYSICAL SCIENCES	220	207	202	(6)	665	625	600	(25)	19,964	19,202	18,799	(403)	17,530	17,870	17,803	(67)
SOCIAL SCIENCES	264	292	270	(22)	521	559	546	(13)	22,308	23,638	23,222	(416)	20,745	22,345	21,854	(491)
INTERNATIONAL INSTITUTE	11	11	10	(1)	27	27	27	-	911	942	903	(39)	893	917	849	(68)
UG EDUCATION & IOE	37	38	38	(1)	100	99	116	17	2,436	2,805	3,145	340	2,270	2,586	2,827	241
COLLEGE	1,205	1,174	1,122	(52)	1,968	1,998	1,944	(54)	76,241	76,594	76,003	(591)	69,060	71,082	70,563	(519)
ENGINEERING	149	145	141	(4)	185	202	209	7	7,138	7,597	8,528	931	5,930	6,440	7,542	1,102
ARTS & ARCHITECTURE	153	147	152	5	88	68	73	5	7,546	6,052	6,245	193	5,740	4,722	5,031	309
THEATER, FILM, & TV	83	92	76	(16)	48	45	44	(1)	2,842	3,088	2,942	(146)	2,317	2,581	2,565	(16)
SCHOOLS with UG Majors	384	384	369	(15)	321	315	326	11	17,526	16,737	17,715	978	13,987	13,743	15,138	1,395
MANAGEMENT	19	18	19	1	18	18	18	-	1,806	1,800	1,851	51	1,543	1,394	1,360	(34)
EDUCATION & INFORMATION	21	25	20	(5)	29	22	23	1	1,044	1,128	904	(224)	756	905	801	(104)
PUBLIC HEALTH	16	15	17	3	-	-	-	-	821	836	816	(20)	637	731	783	52
PUBLIC AFFAIRS	6	9	8	(0)	3	-	-	-	369	395	482	87	306	348	425	77
MEDICINE	7	8	12	4	-	-	1	1	243	227	277	50	118	114	164	50
LAW	3	2	2	-	-	-	-	-	60	40	50	10	52	33	48	15
DENTISTRY	1	2	1	(1)	-	-	-	-	20	40	20	(20)	15	27	16	(11)
SCHOOLS w/o UG Majors	72	78	79	1	50	40	42	2	4,363	4,466	4,400	(66)	3,427	3,552	3,597	45
CAMPUS TOTAL	1,661	1,635	1,570	(65)	2,338	2,353	2,311	(42)	98,130	97,797	98,118	321	86,474	88,377	89,298	921

New Engagements 2008-09

- Course previews for upcoming terms now a standard issue
- Enrollment Planning Committee formed in the College to investigate and recommend measures to protect undergraduate access to courses and maintain high rates of academic progress
 - Many accomplishments during a year of work
 - Recommendations led to major overhaul of “enrollment priority” system
- Development of a wide variety of new reports in support of planning
 - Full-year course offerings
 - Multi-year course rotations
 - General Education course overviews
 - Identification of critical courses for entering freshmen and transfers
 - Term-by-term displays of instructor staffing patterns

2008-2009 Seats Offered and Seats Filled in Undergraduate Primary Classes and Secondary Sections

	Primary Class Sections				Secondary Sections				Seats Offered				Seats Filled			
	08F	09W	09S	Year	08F	09W	09S	Year	08F	09W	09S	Year	08F	09W	09S	Year
BMD RES 0005HA	1.0	1.0	1.0	3.0					90	90	90	270	50	29	77	156
BMD RES 0005HB	1.0	1.0	1.0	3.0					22	24	30	76	20	24	12	56
BMD RES 0193H	1.0	1.0	1.0	3.0	1.0	1.0	1.0	3.0	30	30	30	90	11	16	12	39
BMD RES 0194H	1.0	1.0	1.0	3.0					30	30	30	90	-	9	16	25
BMD RES	4.0	4.0	4.0	12.0	1.0	1.0	1.0	3.0	172	174	180	526	81	78	117	276
EE BIOL 0017		1.0		1.0		4.0		4.0		80		80		47		47
EE BIOL 0019		1.0	1.0	2.0						16	20	36		15	19	34
EE BIOL 0098T			1.0	1.0							11	11			11	11
EE BIOL 0100	1.0	1.0	1.0	3.0	10.0	10.0	10.0	30.0	200	200	203	603	200	195	203	598
EE BIOL 0101	1.0			1.0	2.0			2.0	24			24	23			23
EE BIOL 0103			1.0	1.0			2.0	2.0			51	51			51	51
EE BIOL 0105			1.0	1.0			2.0	2.0			41	41			41	41
EE BIOL 0109		1.0		1.0		6.0		6.0		120		120		109		109
EE BIOL 0110	1.0			1.0	4.0			4.0	80			80	39			39
EE BIOL 0111	1.0	1.0		2.0	6.0	6.0		12.0	120	120		240	111	93		204
EE BIOL 0116		1.0		1.0		9.0		9.0		180		180		163		163
EE BIOL 0120		1.0		1.0		6.0		6.0		121		121		121		121
EE BIOL 0121			1.0	1.0			4.0	4.0			144	144			136	136
EE BIOL 0122	1.0			1.0	3.0			3.0	54			54	53			53
EE BIOL 0124			1.0	1.0			1.0	1.0			12	12			11	11
EE BIOL 0127 M		0.3		0.3						15		15		15		15
EE BIOL 0129		1.0		1.0		4.0		4.0		92		92		92		92
EE BIOL 0130		1.0		1.0		3.0		3.0		60		60		44		44
EE BIOL 0132		1.0	1.0	2.0		1.0	1.0	2.0		15	12	27		15	11	26
EE BIOL 0135			1.0	1.0			4.0	4.0			86	86			86	86
EE BIOL 0137		1.0		1.0		2.0		2.0		32		32		32		32
EE BIOL 0139 M			0.5	0.5							14	14			14	14
EE BIOL 0145 M	0.5			0.5					20			20	4			4
EE BIOL 0151A		1.0		1.0		2.0		2.0		106		106		106		106
EE BIOL 0151B		1.0		1.0						15		15		14		14
EE BIOL 0154			1.0	1.0			1.0	1.0			22	22			22	22
EE BIOL 0162			1.0	1.0			5.0	5.0			108	108			108	108
EE BIOL 0170			1.0	1.0			2.0	2.0			30	30			26	26
EE BIOL 0175		1.0		1.0		2.0		2.0		40		40		35		35
EE BIOL 0176	1.0			1.0					8			8	8			8
EE BIOL 0180	1.0	1.0		2.0					20	20		40	8	8		16
EE BIOL 0187	1.0			1.0	2.0			2.0	50			50	49			49
EE BIOL 0189		2.0		2.0						30		30		15		15
EE BIOL	8.5	17.3	12.5	38.3	27.0	55.0	32.0	114.0	576	1,262	754	2,592	495	1,119	739	2,353
GRNTLGY 0119X M			0.5	0.5							49	49			49	49
GRNTLGY 0140 M	0.3			0.3					36			36	36			36
GRNTLGY 0142SLM			0.5	0.5							25	25			12	12
GRNTLGY	0.3	1.0	1.3						36	74	110		36	61	97	

Critical Courses for New Undergraduates Entering UCLA in Fall 2009 2008-09 Enrollment Benchmarks

SUBJECT	COURSE	2008 Fall Quarter Enrollment by Student Status				Times Offered 2008-09	Est. Total 2008-09 Fall-Winter-Spring Enrollment by Student Status			
		Fall Total	1st Year from HS	1st Year Transfer	Continuing Students		FWS Total	1st Year from HS	1st Year Transfer	Continuing Students
ENGCAMP	2	250	241	-	9	3	375	355	4	16
ENGCAMP	3	909	709	7	193	3	2,383	2,037	13	333
LIFESCI	1	541	130	39	372	3	1,648	854	101	693
LIFESCI	2	596	3	53	540	3	1,652	318	136	1,198
LIFESCI	3	445	-	107	338	3	1,499	1	233	1,265
LIFESCI	4	446	-	31	415	3	1,414	1	174	1,239
PSYCH	10	571	316	23	232	3	1,331	684	47	600
PSYCH	0100A	492	-	280	212	3	1,021	52	448	521
CHEM	0014A	1,223	1,062	27	134	2	1,718	1,474	37	207
CHEM	0020A	906	770	41	95	2	1,068	890	48	130
MATH	0003A	579	482	6	91	2	852	713	9	130
MATH	0003B	201	133	6	62	3	1,029	837	20	172
MATH	0003C	368	78	12	278	3	914	467	22	425
MATH	0031A	698	578	14	106	2	907	745	18	144
PHYSICS	0001A	192	29	23	140	3	924	689	38	197
PHYSICS	0006A	570	1	29	540	3	1,332	175	158	999
ECON	11	523	1	279	243	3	1,118	66	387	665
ECON	101	187	-	21	166	3	846	6	303	537
POL SCI	10	249	17	29	203	2	549	22	50	477
POL SCI	20	252	107	20	125	2	612	133	46	433
POL SCI	30	158	-	11	147	2	553	1	234	318
POL SCI	40	281	-	7	274	2	676	1	230	445
SOCIOL	1	361	7	-	354	3	990	113	15	862

Undergraduate Course Offerings by Instructor Pattern / Fall 2004 - Spring 2009

Set Course	04F	05W	05S	05F	06W	06S	06F	07W	07S	07F	08W	08S	08F	09W	09S	N	Reg Not		%	Unit	Avg	Sec
	Qtr	Reg	Not	Reg	Val	Enroll	Sctn	Reg	Val	Enroll	Sctn	Reg	Val	Enroll	Sctn	Qtr	Reg	Not	Reg	Val	Enroll	Sctn
1 BIOENGR 199	1		1	1	1	1	1	1	1	1	1	1	1	1	1	14	14	0	100	2	9	
1 BIOENGR 100			1	1				1			1			1		5	5	0	100	4	40	yes
1 BIOENGR 110						1			1			1			1	4	4	0	100	4	39	yes
1 BIOENGR 120						1		1		1			1			4	4	0	100	4	37	yes
1 BIOENGR 0180L							1			1					1	3	3	0	100	3	17	yes
1 BIOENGR 0105 M											1			1		2	2	0	100	4	11	yes
1 BIOENGR 0106 M											1			1		2	2	0	100	4	3	yes
1 BIOENGR 0131 M												1			1	2	2	0	100	4	11	yes
1 BIOENGR 0172 M												1			1	2	2	0	100	4	19	yes
1 BIOENGR 0181L								1			1					2	2	0	100	3	9	yes
1 BIOENGR 1	1															1	1	0	100	4	24	
1 BIOENGR 2		1														1	1	0	100	4	20	
1 BIOENGR 3			1													1	1	0	100	4	20	yes
1 BIOENGR 0001L	1															1	1	0	100	3	25	yes
1 BIOENGR 0002L		1														1	1	0	100	3	21	yes
1 BIOENGR 0003L			1													1	1	0	100	3	23	yes
1 BIOENGR 0104 M													1			1	1	0	100	4	7	yes
2 BIOENGR 99			1	1	1	1	1	1	1	1	STF		STF	1	1	12	10	2	83	1	2	
2 BIOENGR 0182A							LEC			LEC			1		1	4	2	2	50	4	33	yes
2 BIOENGR 176										LEC				1		2	1	1	50	4	48	yes
2 BIOENGR 10		1			1		GSI				ADJ	ADJ		1	STF	7	3	4	43	2	42	yes
2 BIOENGR 180							1			STF				STF		3	1	2	33	4	28	yes
2 BIOENGR 0182B								LEC			STF			1		3	1	2	33	4	27	yes
2 BIOENGR 0182C									LEC			STF			1	3	1	2	33	4	15	yes
3 BIOENGR 19					LEC			LEC		LEC			LEC			4	0	4	0	1	13	
3 BIOENGR 165								LEC			LEC			LEC		3	0	3	0	4	17	yes
3 BIOENGR 181								STF			STF					2	0	2	0	4	18	yes

A Realization – Summer 2009

- **Close-up studies** of course offerings in relation to budget constraints and student progress may be new business for a UC institutional research office, but
- **CSU colleagues must do this sort of thing all the time!**
- Contacts with Ed Sullivan at Fullerton, with Sutee Sujitparapitaya at San Jose State, and with our special guest showed this to be true ...
- But of course there is much more to the story, and with that, please welcome ...
 - ***VAN NOVACK***

Shaken & Stirred

Depressed Conditions and New Engagements for Institutional Research

Bob Cox – UCLA

with special guest

Van Novack – Cal State Long Beach

California Association for Institutional Research
November 20, 2009 Sacramento

Contact: rcox@ponet.ucla.edu