

NATIONAL STUDENT CLEARINGHOUSE[®]



Benchmarking using the National Student Clearinghouse Research Center Data Snapshots and StudentTracker Service

CAIR Conference
November, 2013

Vijaya Sampath
Senior Research Associate
National Student Clearinghouse Research Center

Agenda

- **Data Snapshots**
 - What are Data Snapshots
 - Two to Four Transfers
 - Contributions of Two-Year Institutions
 - Concurrent Enrollment
- **Research with StudentTracker**
 - What is StudentTracker?
 - Why StudentTracker

Agenda Contd.

- Query Options in StudentTracker
- Expanded Data Elements Coverage
- **Reports**
 - Control Report
 - Aggregate Report
 - Detail Report
- **Questions?**

Data Snapshots



Data Snapshots

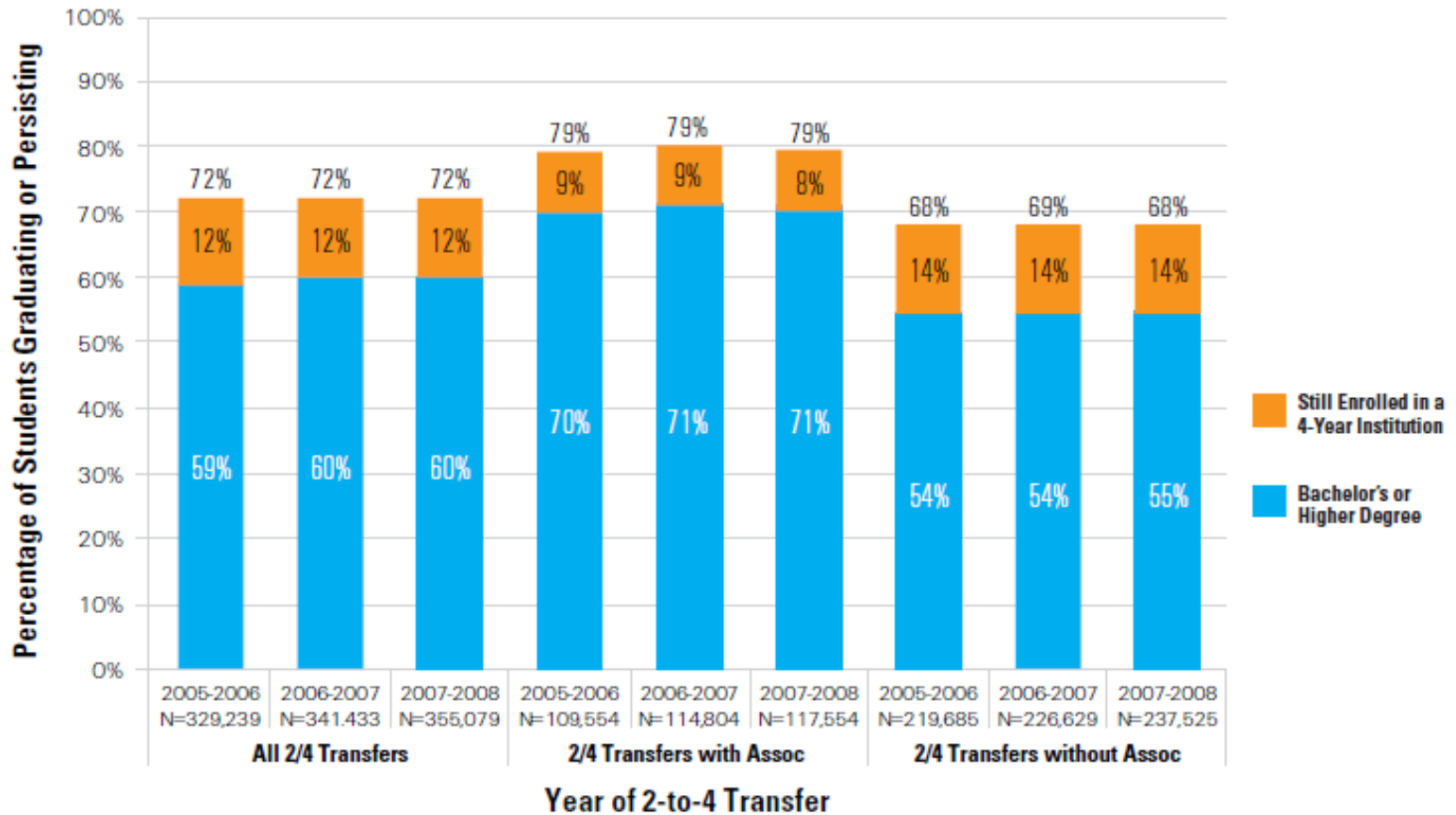
- Brief research reports on student graduation, enrollment, transfer, and other important student outcomes at the National level.
- Typically one to three page long with charts and analytical summary.
- Use student level data submitted to the Clearinghouse by participating institutions.
- How are topics selected?

Two to Four Transfers

- **Cohort:** Students who transferred from two-year to four-year institutions.
- **Cohort Years:** 2005-06, 2006-07, 2007-08
- **Outcome:** Graduation and Persistence within 4 years of transferring.

Two to Four Transfers

Outcomes of Students Who Transferred from Two-Year to Four-Year Institutions
(Four Years After Transfer)



Two to Four Transfers - Takeaways

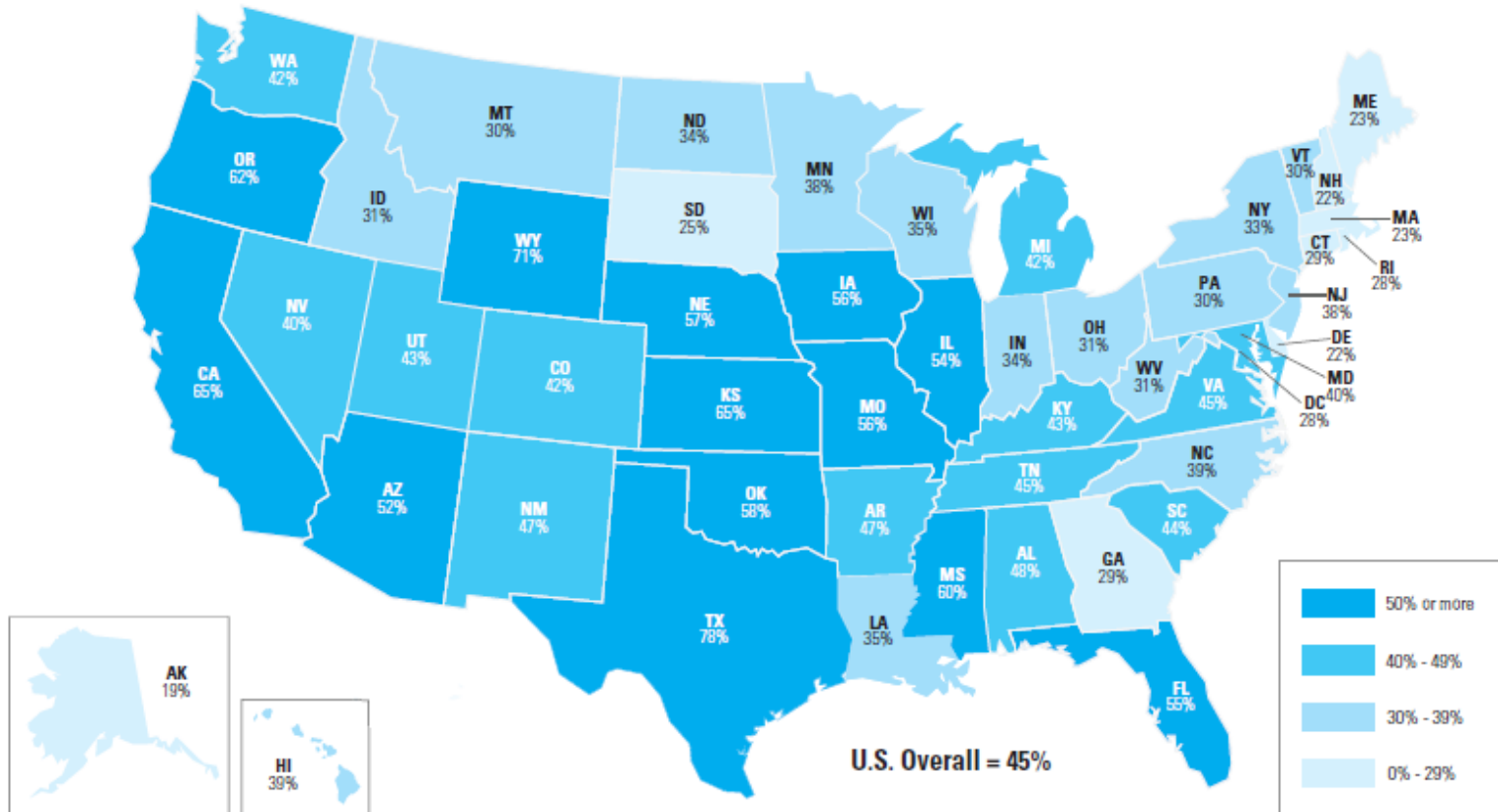
- 72% of the students who transferred either graduated or persisted after 4 years.
- 12% of all students who transferred were still enrolled after 4 years.
- Graduation rates highest amongst students transferring with an Associates degree.

Contributions of Two-Year Institutions

- **Cohort:** Students at four-year institutions who completed a degree in 2010-11.
- **Cohort Year:** 2010-2011
- **Outcome:** What percent of the four-year completers had previous enrollments in two-year institutions.

Contributions of Two-Year Institutions

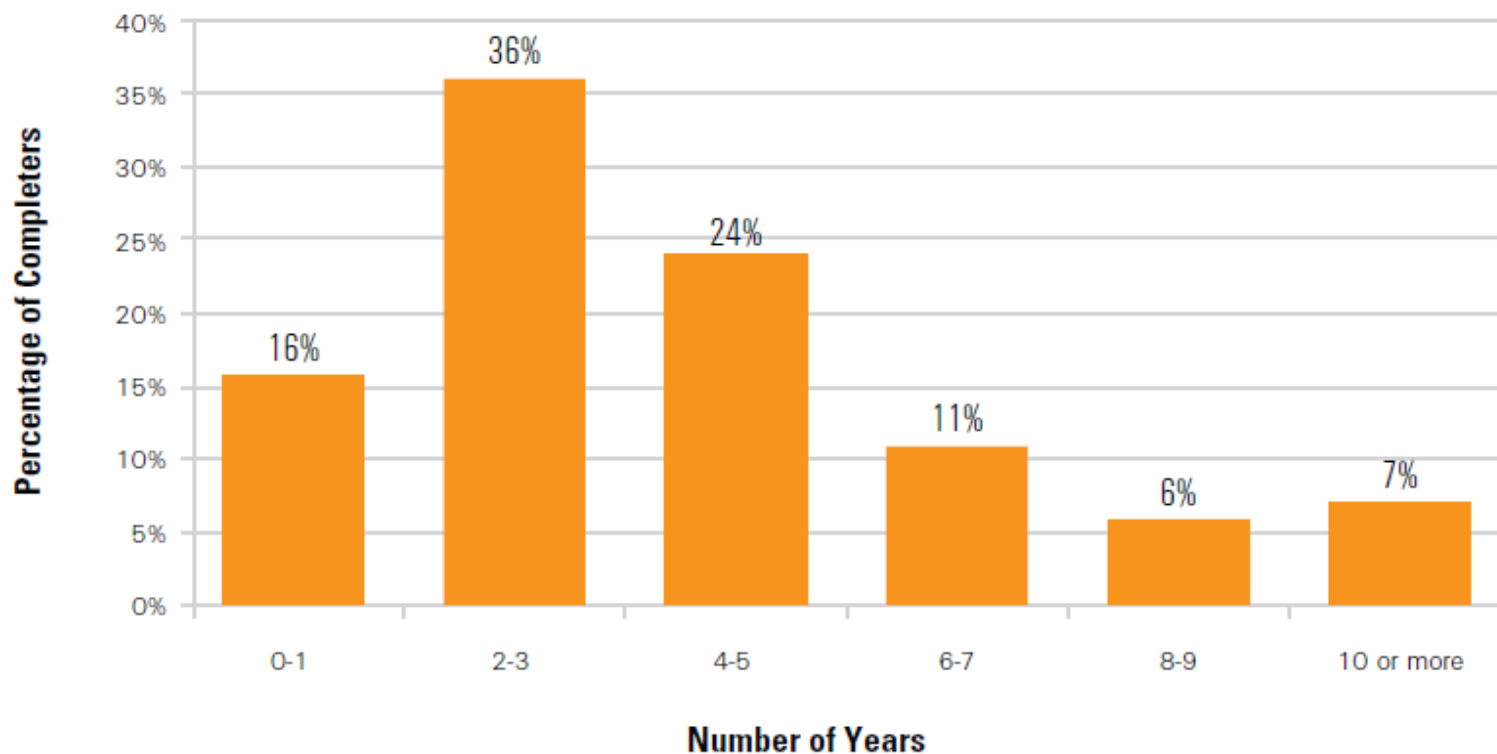
Percentage of Students Completing Degrees at Four-Year Institutions Who Previously Enrolled at Two-Year Institutions*



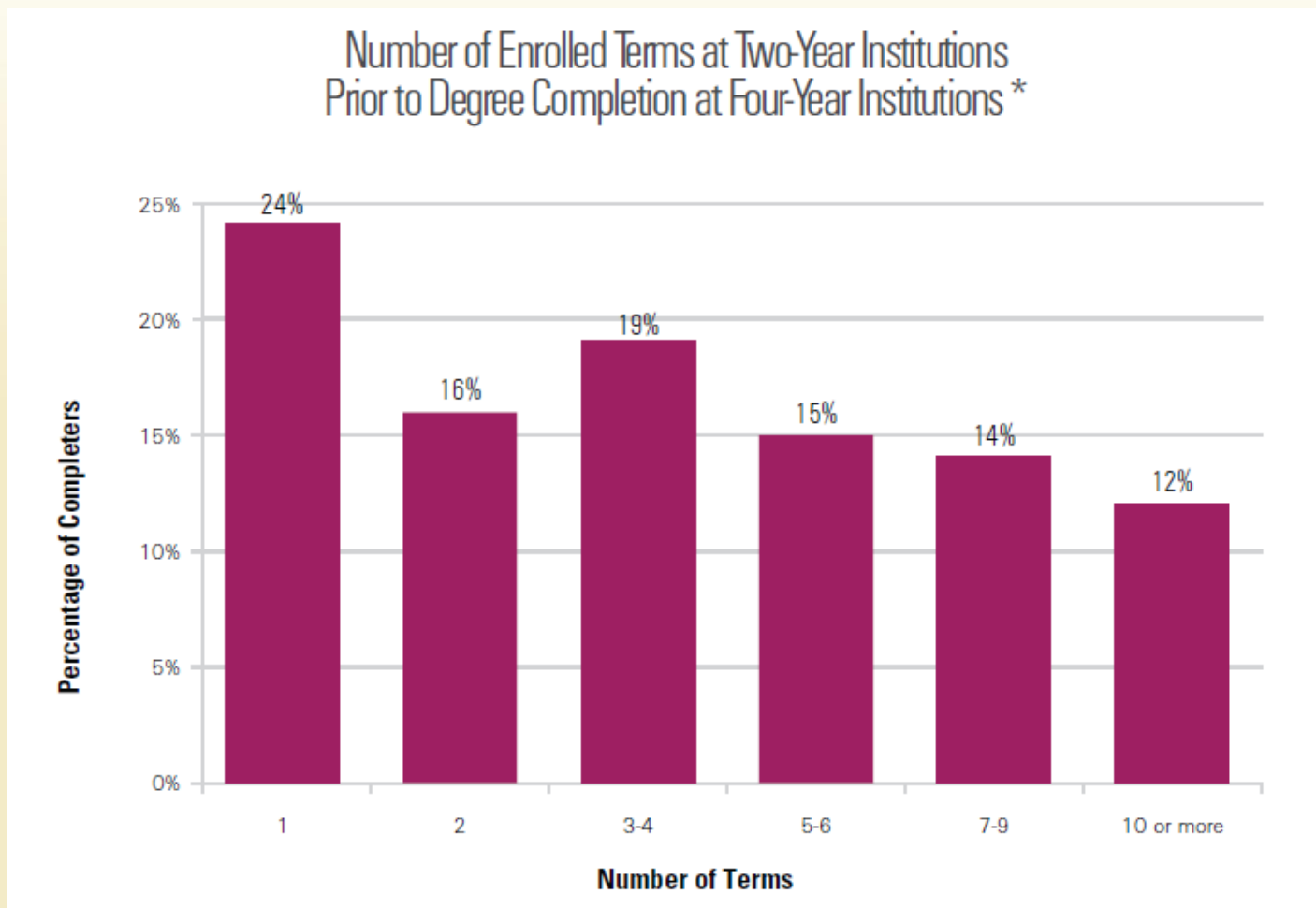
*Students were considered enrolled at two-year institutions if they had at least one full-time or part-time enrollment at a two-year institution prior to the four-year completion date.

Contributions of Two-Year Institutions

Number of Years Between Degree Completion at Four-Year Institutions and Most Recent Enrollment at Two-Year Institutions



Contributions of Two-Year Institutions



*Terms in this analysis are institutionally defined, so term length varies. The average term length was 106 days.

Contributions of Two-Year Institutions - Takeaways

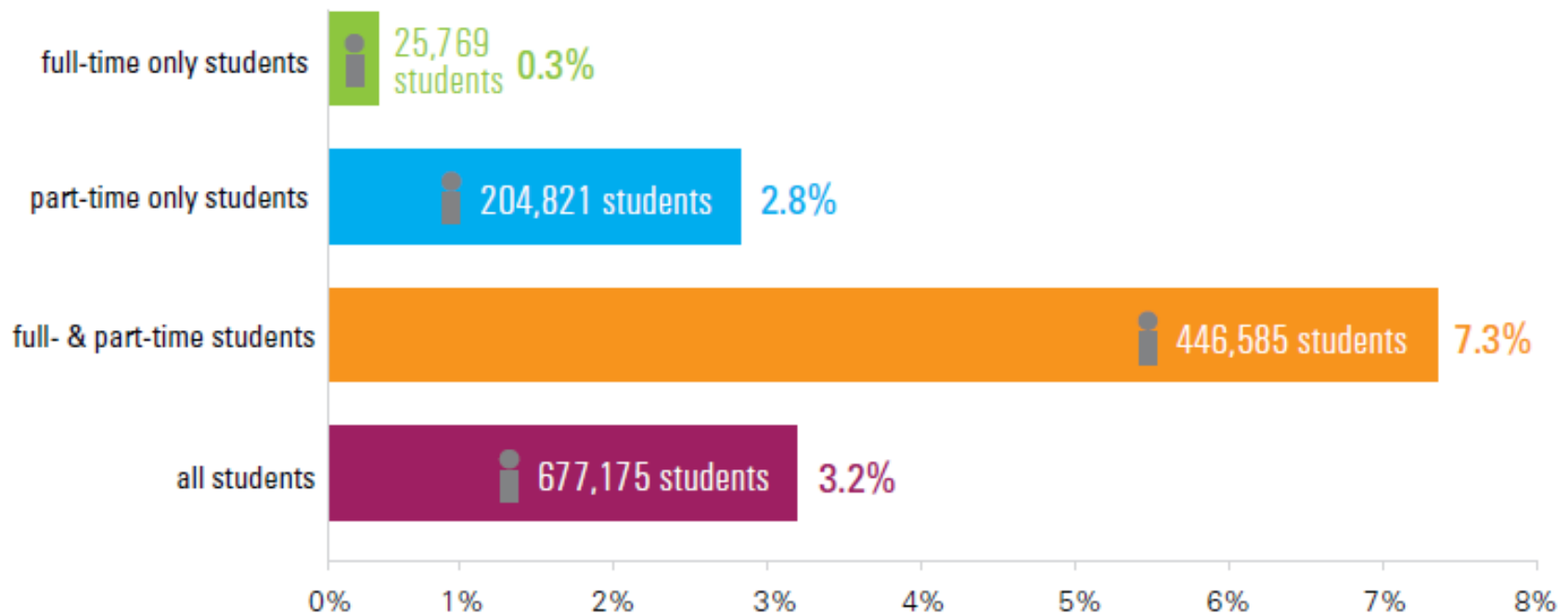
- 45% of all students who completed a degree at a four-year institution in academic year 2010-11 had previously enrolled at a two-year institution.
- Over 50% of the four-year completers graduated within three years of leaving their two-year institution.
- Close to 60% of the four-year completers were previously enrolled at a two-year institution for at least three terms.

Concurrent Enrollment

- **Cohort:** Students enrolled in post-secondary institutions for at least 30 consecutive days in the academic year.
- **Cohort Year:** 2010-2011
- **Outcome:** What percent of the students in the cohort had overlapping enrollments for at least 30 consecutive days in two or more institutions in 2010-11.
- Existing data sources cannot identify concurrent enrollments.

Concurrent Enrollment

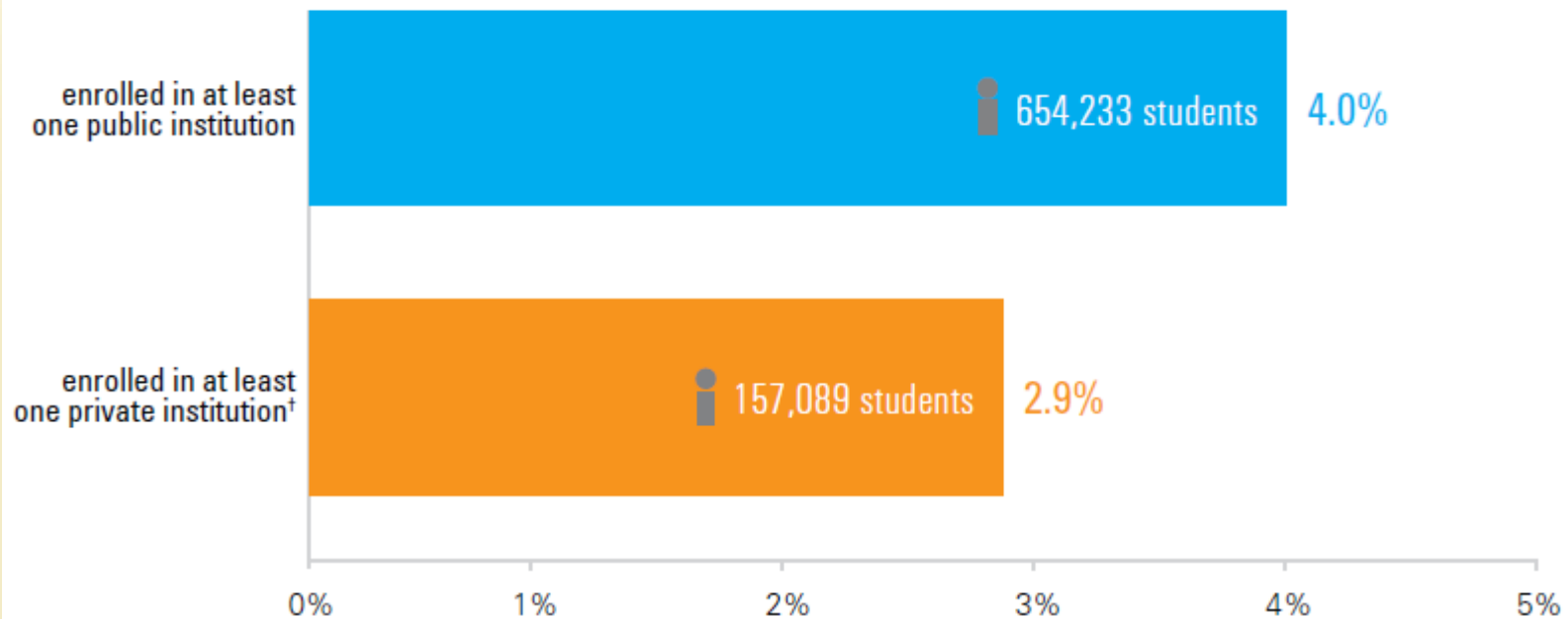
Concurrent Enrollment by Student Enrollment Status*



* Students who were enrolled at postsecondary institutions for at least 30 consecutive days between August 15, 2010 and August 14, 2011. Concurrent enrollment is defined as at least 30 consecutive days of overlapping enrollments at two or more postsecondary institutions during the study period, including full-time only, part-time only, or a mix of full- and part-time.

Concurrent Enrollment

Concurrent Enrollment of Students Attending Public vs. Private Institutions*



* Students who were enrolled at postsecondary institutions for at least 30 consecutive days between August 15, 2010 and August 14, 2011. Concurrent enrollment is defined as at least 30 consecutive days of overlapping enrollments at two or more postsecondary institutions during the study period, including full-time only, part-time only, or a mix of full- and part-time.

† Because of the small percentage of concurrent enrollments at private for-profit institutions (about 0.3%), concurrent enrollments at private not-for-profit and private for-profit institutions were combined.

Concurrent Enrollment - Takeaways

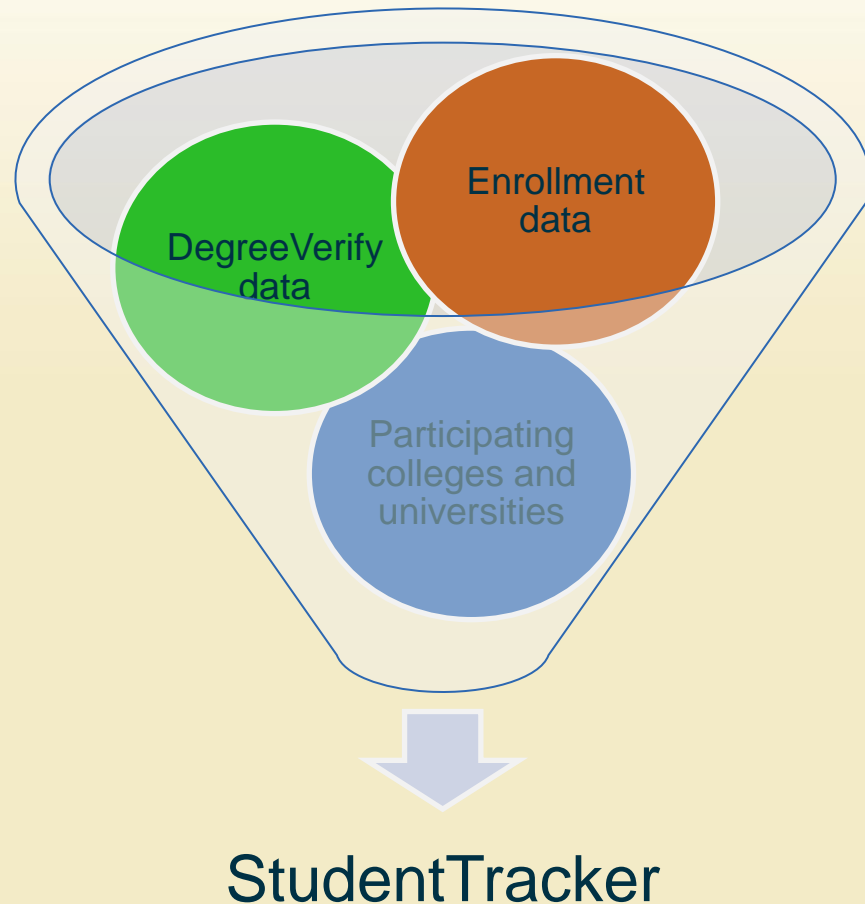
- The highest rate of concurrency (7.3%) was among students who had a combination of full- and part-time statuses.
- The majority of students with concurrent enrollments (55.1%) were enrolled in both a 2- and a 4-year institution at the same time.
- Most students (75.7%) who were concurrently enrolled attended only public institutions. One-fifth (21.0%) attended a combination of public and private institutions concurrently.

Research with StudentTracker



What is StudentTracker?

StudentTracker searches a database of records on over 110 million students, which represent postsecondary enrollments and achievements nationwide. We maintain these records on behalf of the more than 3,500 colleges and universities — over 95% of total U.S. enrollment in higher education.



StudentTracker Users



STCU



Members

- Systems of institutions
- Outreach programs
- Other educational organizations



STHS

Why StudentTracker?

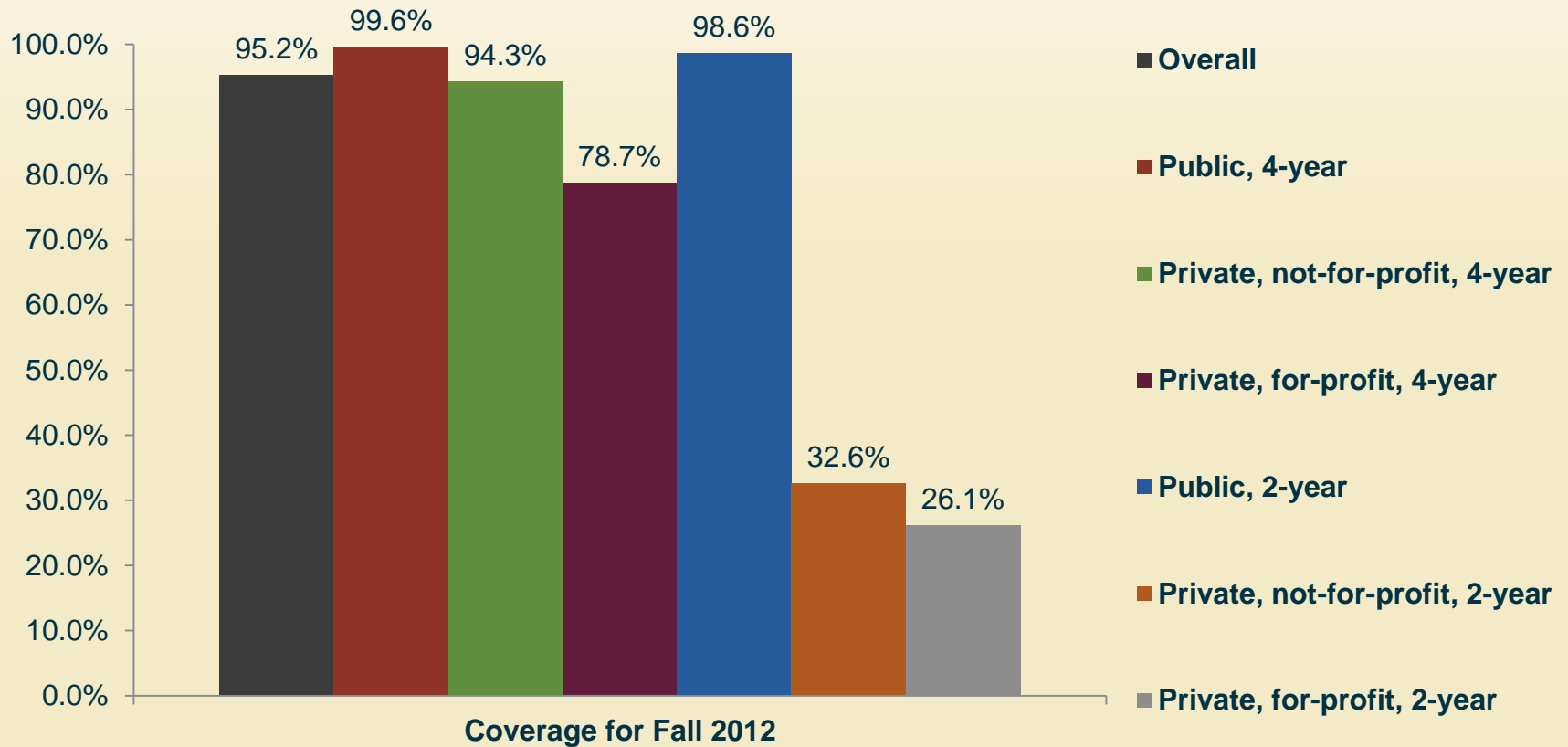
- Only source for comprehensive, up-to-date national postsecondary enrollment and degree data.
- Identifies enrollment trends and patterns.
- Tracks transfer student enrollment nationwide.
- Includes all types of institutions: 2-/4-year, graduate, public/private, not for-profit/for-profit, trade, vocational, etc.
- Enables you to fulfill federal reporting requirements.

Why StudentTracker?

- Identifies students who are concurrently enrolled.
- Provides historical records for longitudinal studies.
- Less expensive and more accurate than other measurement tools, such as surveys.
- Facilitates compliance with FERPA, The Higher Education Act, and other applicable laws.
- Institutions can receive StudentTracker for free or at a 50% discount.

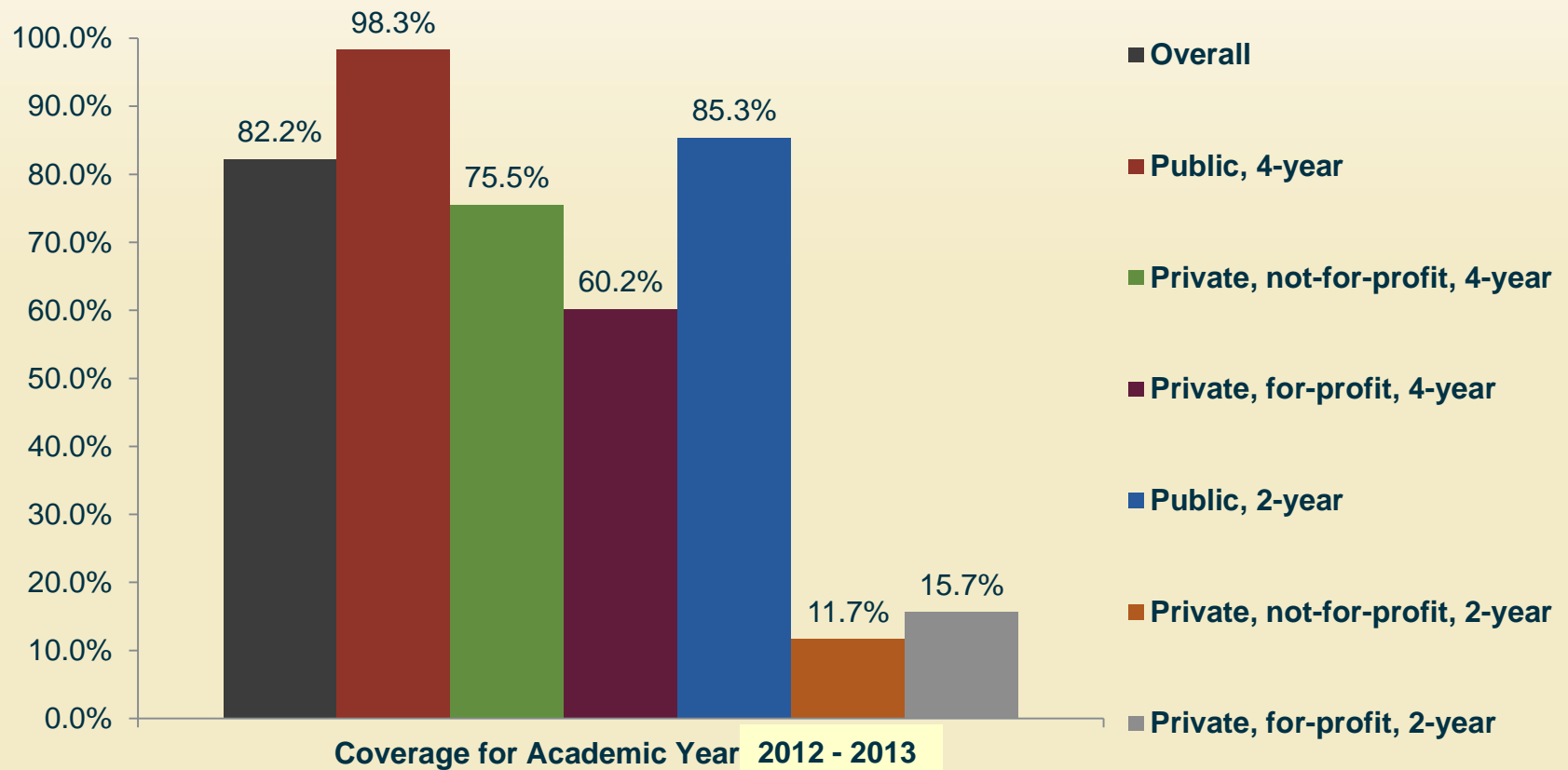
Enrollment Coverage

Enrollment Coverage By Institutional Sector



Degree Coverage

Degree Coverage By Institutional Sector



Determine Your Research Needs

Admissions

- Where did former prospective students enroll if they did not enroll here?
- Where did applicants and/or students attend prior to applying here?

Institutional Research

- Where did former students go after leaving here?
- What were the enrollment and graduation patterns of a single group of students?

Select the Cohort

- Admitted applicants who did not enroll.
- Undergraduate or graduate school applicants.
- Currently enrolled students.
- Students who were previously enrolled and have left the school: withdrawals, transfers, alumni.
- Cohort of incoming freshmen or transfers from 6 years ago.

StudentTracker Query Options

Match up the question and cohort to the appropriate query type and determine the search date for the students. There are 5 queries available for Colleges and Universities

Subsequent Enrollment (SE)

- For previously enrolled students (alumni, withdrawals, transfers)

• No SSN

Search date



Declined Admissions (DA)

- For admitted applicants who did not enroll

• No SSN

Search date



Prior Attendance (PA)

- For applicants
- May use SSN for applicants only
- Do NOT use SSN for enrolled students!

Search date



Sibling enrollment (SB)

- For siblings/parents listed on financial aid documents

• No SSN

Search date



Longitudinal Cohort (CO)

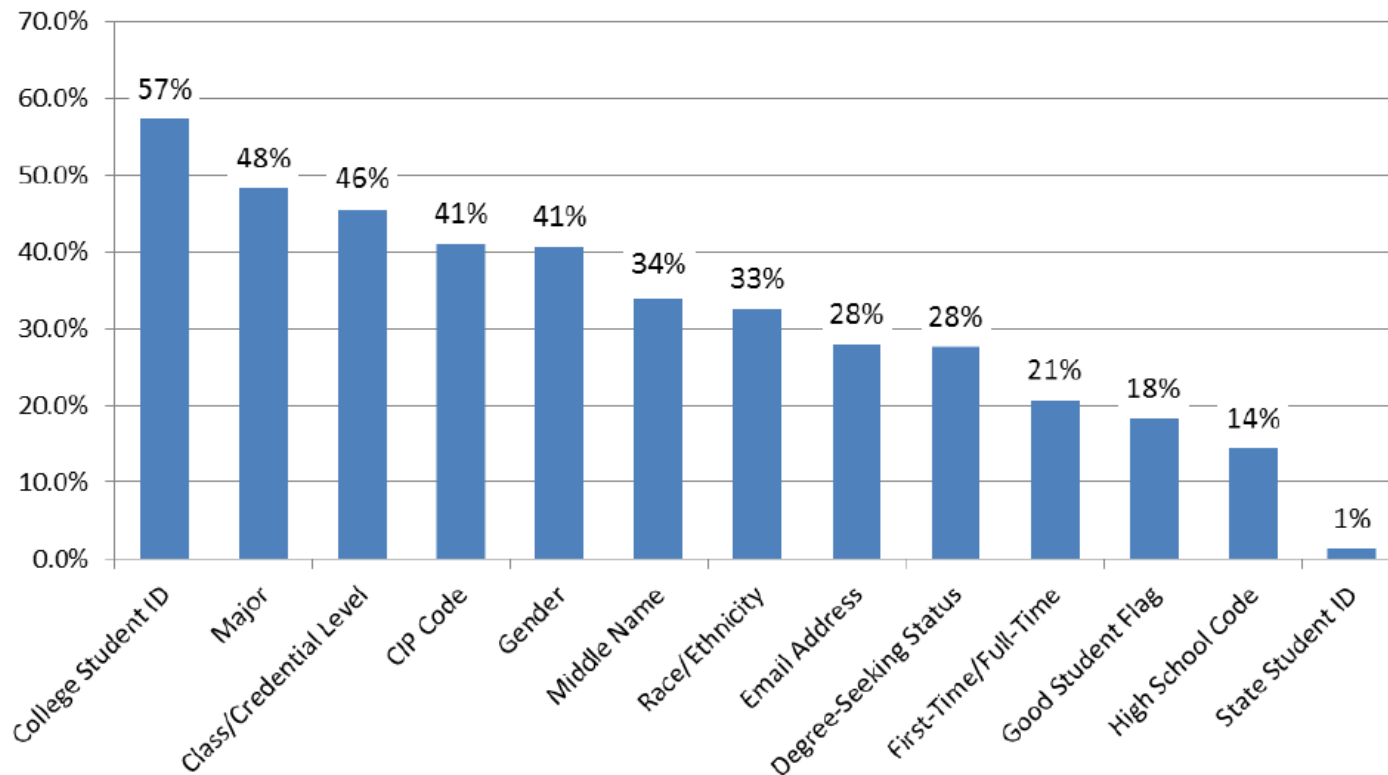
- For VSA purposes
- Report contains enrollment, transfer, and graduation rates

• No SSN

Search date

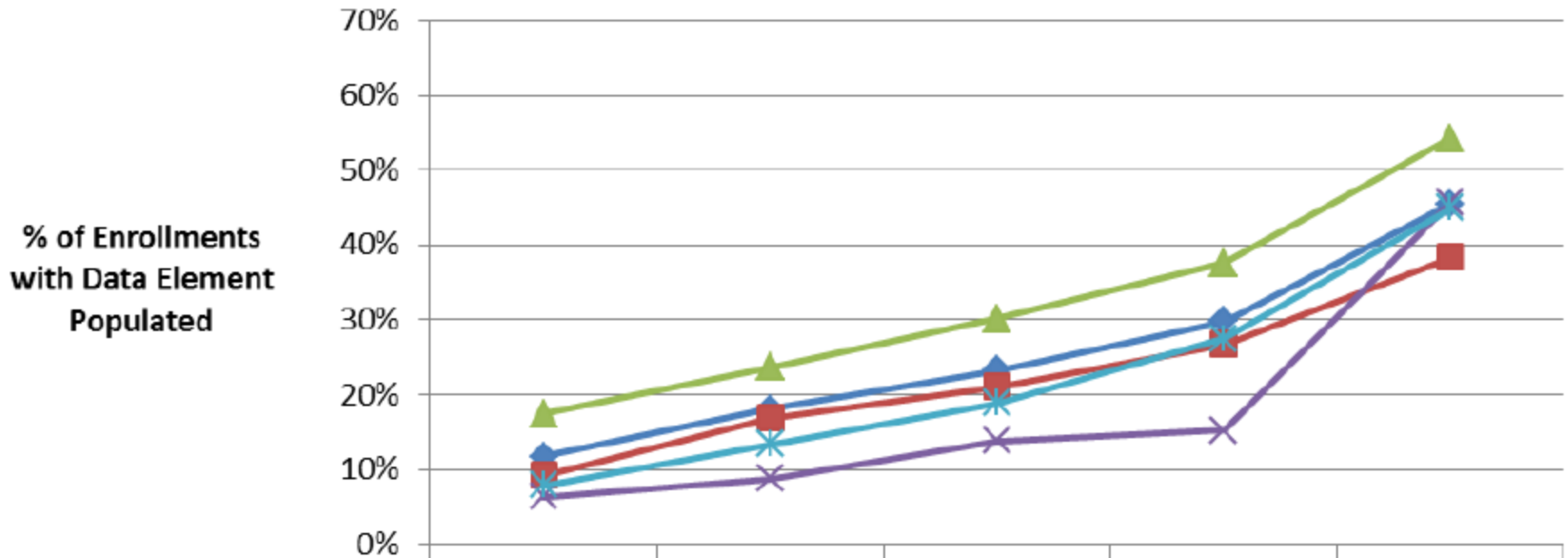


Percentage of 2012-2013 Enrollments with Additional Data Elements Reported



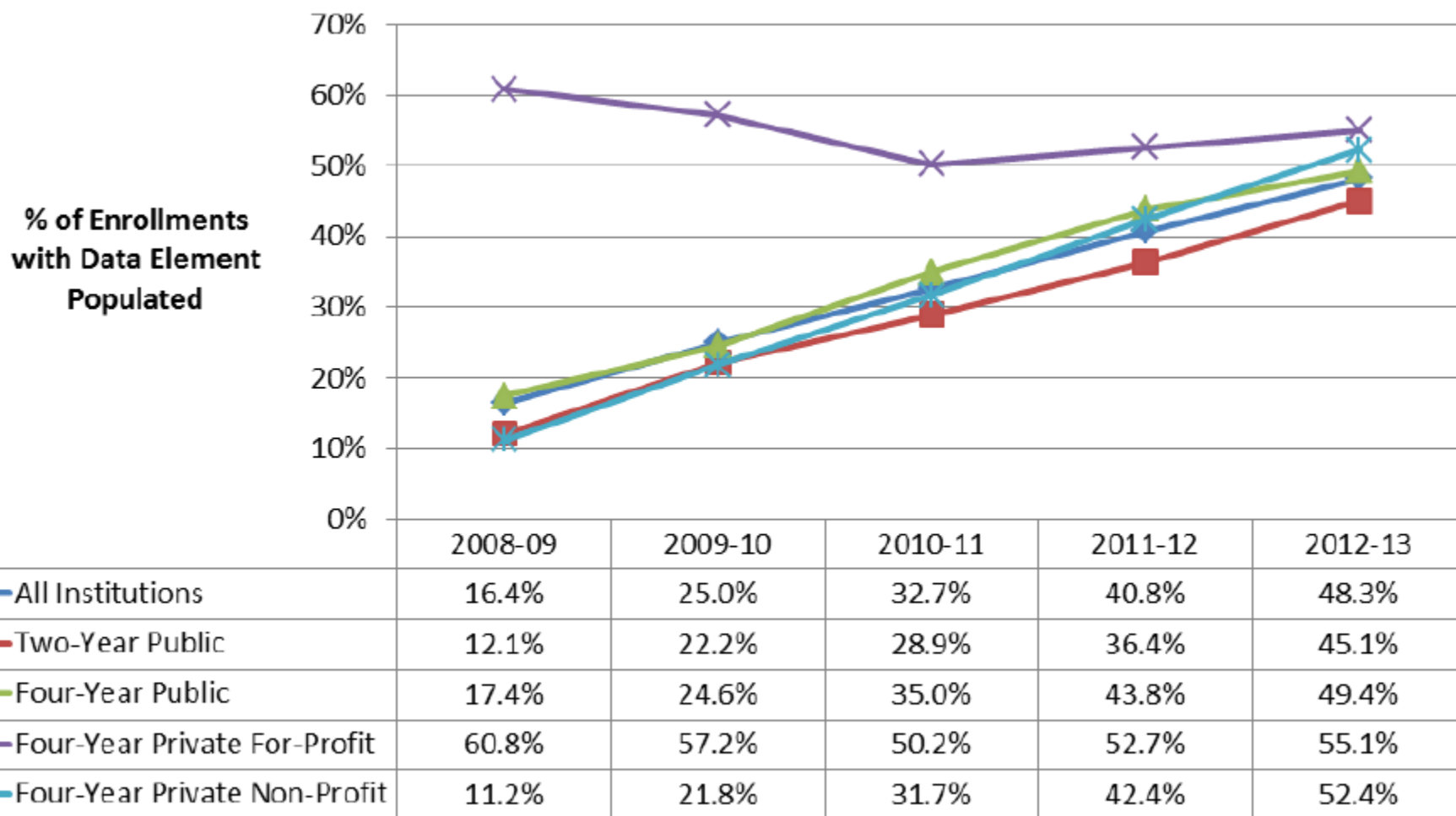
Note: This analysis is based on the most recent enrollment record submitted for a student-school combination in any given year.]

Class Level Coverage

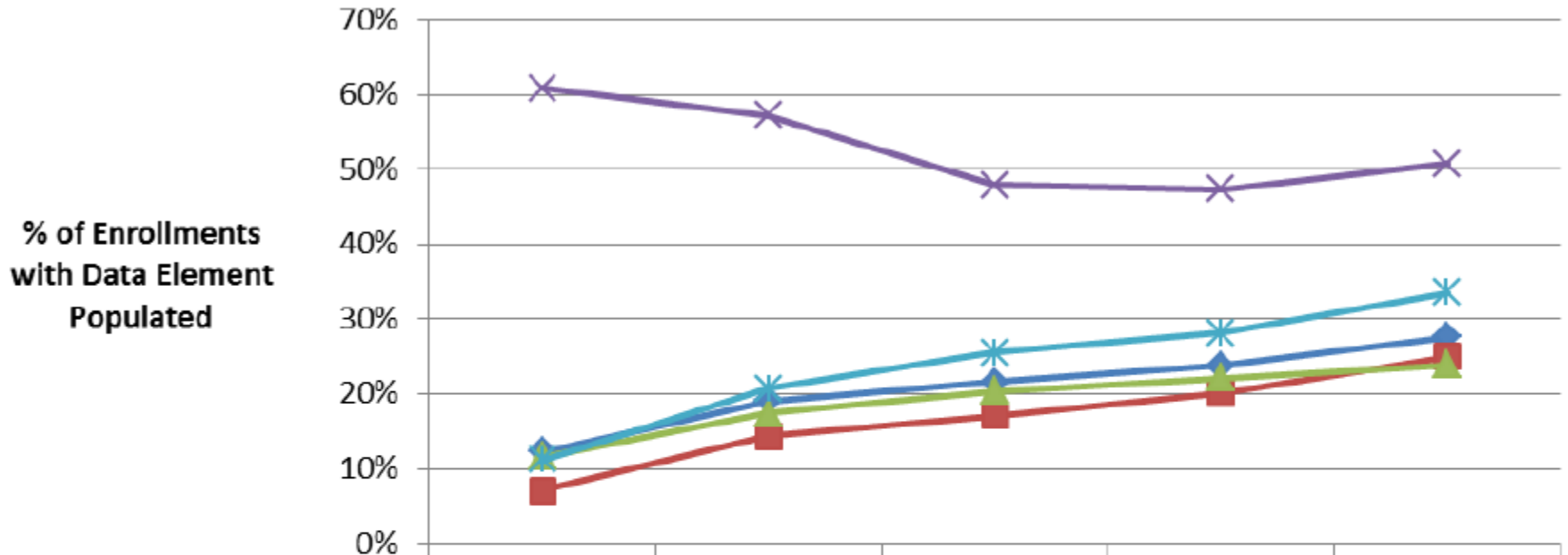


	2008-09	2009-10	2010-11	2011-12	2012-13
◆ All Institutions	11.7%	18.1%	23.3%	29.8%	45.5%
■ Two-Year Public	9.2%	16.9%	21.1%	26.7%	38.4%
▲ Four-Year Public	17.4%	23.7%	30.2%	37.7%	54.3%
× Four-Year Private For-Profit	6.4%	8.8%	13.8%	15.2%	45.7%
* Four-Year Private Non-Profit	7.9%	13.4%	18.8%	27.5%	44.9%

Enrollment Major Coverage



Degree Seeking Status Coverage



	2008-09	2009-10	2010-11	2011-12	2012-13
◆ All Institutions	12.3%	19.1%	21.6%	23.8%	27.7%
■ Two-Year Public	7.1%	14.3%	17.1%	20.2%	25.0%
▲ Four-Year Public	11.7%	17.4%	20.4%	22.2%	23.9%
✕ Four-Year Private For-Profit	60.8%	57.2%	48.0%	47.4%	50.8%
* Four-Year Private Non-Profit	11.2%	20.7%	25.5%	28.2%	33.6%



Reports

Detail Report Full List of Elements

Your Unique ID

First Name

Middle Name

Last Name

Name Suffix

Requestor Return Field

Record Found Y/N

Search Date

College Code / Branch

College Name

College State

2 year / 4 year

Public / Private

Enrollment Begin

Enrollment End

Enrollment Status

Class Level

Enrollment Major 1

Enrollment CIP 1

Enrollment Major 2

Enrollment CIP 2

Graduated?

Graduation Date

Degree Title

Degree Major 1

Degree CIP 1

Degree Major 2

Degree CIP 2

Degree Major 3

Degree CIP 3

Degree Major 4

Degree CIP 4

College Sequence

Control Report

Date:
05/24/2006

NATIONAL STUDENT CLEARINGHOUSE

STUDENTTRACKER CONTROL REPORT #17907
FOR HOMETOWN UNIVERSITY (001234-00)

YOUR FILE CREATION DATE: 5/23/2006
RANGE OF SEARCH DATES PROVIDED
IN REQUEST FILE: 07/03/2000 - 01/16/2006

TOTAL STUDENTS IN YOUR REQUEST
FILE: 11|
TOTAL STUDENTS WITH NO RESPONSE
DATA AVAILABLE: 1

TOTAL STUDENTS FOUND AND
INCLUDED IN AGGREGATE REPORT: 10
LESS: STUDENT LEVEL
REPORTING BLOCKED BY SCHOOL: 0
LESS: STUDENT LEVEL
REPORTING BLOCKED BY STUDENT: 0

TOTAL STUDENTS REPORTED AT
DETAIL LEVEL: 10

Students from the following colleges in your state (with 1,000+ students) are not included in this report as they do not report enrollment information to the Clearinghouse. For questions, contact us at studenttracker@studentclearinghouse.org.

School Code	School Name	Enrollment Size
000111-00	UNIVERSITY COLLEGE	1,500

Overview of your original inquiry and the results

1. Your file creation date.
2. The range of values you provided in the search date field.
3. The number of students you submitted.
4. The number of students for whom no data was available. This may occur when:
 - Student attended a school that does not participate with the Clearinghouse
 - Student’s record is in our database, but not within your search date.
 - Match could not found with the information provided.
 - Student did not enroll in any other school.
5. The number of students found.
6. The number of students whose “first” record was blocked either by the reporting school or the student.
7. The difference between found students and blocked students.

Aggregate Report

Date: 05/24/2008

NATIONAL STUDENT CLEARINGHOUSE
 STUDENTTRACKER AGGREGATE REPORT : ANALYSIS OF INITIAL TRANSFERS
 FOR HOMETOWN UNIVERSITY (001234-00)
 REPORT # 17907

SCHOOL CODE	SCHOOL NAME	SCHL TYPE	PUB/ PVT	ID ST	% OF STUDENTS	# OF STUDENTS	# RECORDS BLOCKED BY SCHOOL	# RECORDS BLOCKED BY STUDENTS	# STUDENTS ON DETAIL REPORT	# AWARDED DEGREE BY THIS SCHOOL	# AWARDED DEGREE BY LATER SCH(S)
001234-00	HOMETOWN UNIVERSITY	4	Public	ID	18.18%	2	0	0	2	0	0
000123-00	SOUTH POLE UNIVERSITY	4	Public	FL	9.09%	1	0	0	1	0	0
000134-00	NORTH POLE UNIVERSITY	4	Public	CO	9.09%	1	0	0	1	0	0
000145-00	MAINSTREET COLLEGE	2	Public	CA	9.09%	1	0	0	1	0	0
000156-00	DALE COMMUNITY COLLEGE	4	Private	MT	9.09%	1	0	0	1	1	0
000167-00	CELOSIA COLLEGE	4	Public	OR	9.09%	1	0	0	1	1	0
000178-00	ASTER UNIVERSITY	4	Public	NV	9.09%	1	0	0	1	0	1
000189-00	LARKSPUR UNIVERSITY	2	Public	WA	9.09%	1	0	0	1	0	0
000122-00	WAY COMMUNITY COLLEGE	4	Public	WA	9.09%	1	0	0	1	1	0
TOTAL:					100.00%	10	0	0	10	3	1

Summary of the “first” schools attended by your cohort based on the search date.

- A school will be listed here if it was any of your student’s “first” school of attendance. Schools that were not a student’s “first” school of attendance are listed on the detail report.
- Thus, the search date you provided for each student in the request file drives the output of this report. If your search date is during the period of time the student was still enrolled at your institution, you will see your own institution at the top of the list.

Detail Report



Lance	C	Smith	881-92631_	Y	20000703	000178-00	ASTER UNIVERSITY	NV	4	Public	20010827	20011219	F	N						1
Lance	C	Smith	881-92631_	Y	20000703	000178-01	ASTER UNIVERSITY	NV	4	Public	20020122	20020514	W	N						
Lance	C	Smith	881-92631_	Y	20000703	001196-00	SUNSET UNIVERSITY	CA	4	Private	20040120	20040512	F	N						2
Lance	C	Smith	881-92631_	Y	20000703	001196-01	SUNSET UNIVERSITY	CA	4	Private	20040823	20041205	F	N						
Lance	C	Smith	881-92631_	Y	20000703	001196-02	SUNSET UNIVERSITY	CA	4	Private	20050118	20050503	F	N						
Lance	C	Smith	881-92631_	Y	20000703	001196-03	SUNSET UNIVERSITY	CA	4	Private				Y	20051203					
Bradee		Smith	881-95191_	N	20010903															
Carmen	A	Jones	002-61778_	Y	20020129	001261-00	TASADENA CITY COLL	CA	2	Public	20020114	20020525		N						1
Carmen	A	Jones	002-61778_	Y	20020129	001261-01	TASADENA CITY COLL	CA	2	Public	20020528	20020817		N						

Enrollment and graduation information for the students as available in our database and based on the search date.

- FERPA-blocked records do not appear in the detail report. If all of a student's records are blocked, the student will then be indistinguishable from those students that were not found at all.
- Graduation indicators and detailed degree information is only available to schools who are active DegreeVerify participants.
- Additional enrollment information such as class level and major are only available to schools that submit additional data elements in their CORE enrollment submissions.

A Note Regarding FERPA

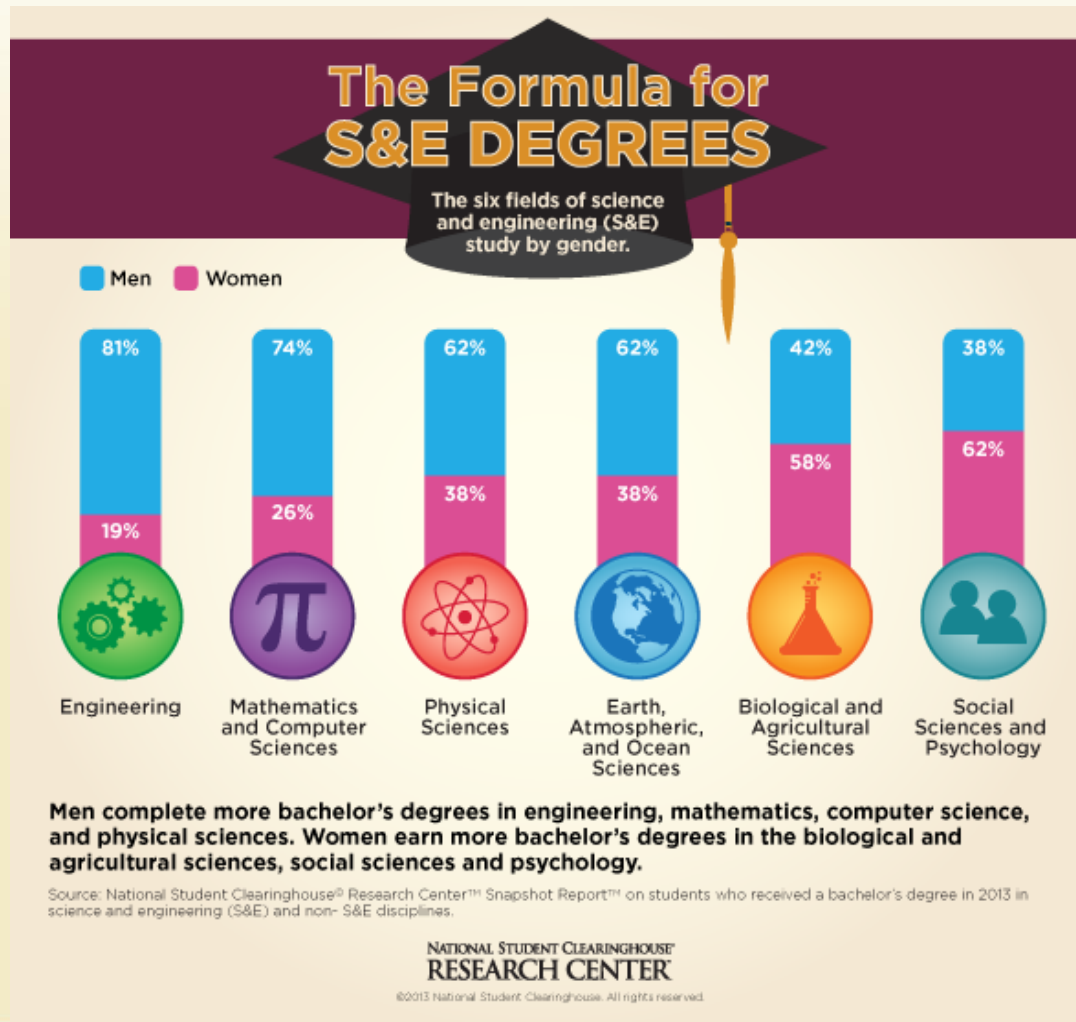
National

	2006-07		2008-09		2010-11	
	# Blocked	% Blocked	# Blocked	% Blocked	# Blocked	% Blocked
Overall	1,055,349	4.73	1,191,405	4.84	1,209,480	4.40
Level						
2-year	543,787	6.13	652,894	6.47	632,792	5.52
4-year	511,562	3.80	538,511	3.71	576,688	3.59

Illinois

	2006-07		2008-09		2010-11	
	# Blocked	% Blocked	# Blocked	% Blocked	# Blocked	% Blocked
Overall	14,234	1.23	13,529	1.13	12,176	0.94
Level						
2-year	1,860	0.30	1,351	0.22	709	0.11
4-year	12,374	2.30	12,178	2.12	11,467	1.81

NSCRC's Latest Snapshot: Science & Engineering Bachelors Degrees



Questions?

NATIONAL STUDENT
CLEARINGHOUSE®

Thank You!

Research Center Reports:
<http://research.studentclearinghouse.org/>

Vijaya Sampath:
sampath@studentclearinghouse.org

NATIONAL STUDENT
CLEARINGHOUSE®