

Where Did All of Our Students
Go?

Matching IR Data with National
Student Clearinghouse Data

Jacqueline Nagatsuka
Director, Institutional Research,
Santa Monica College

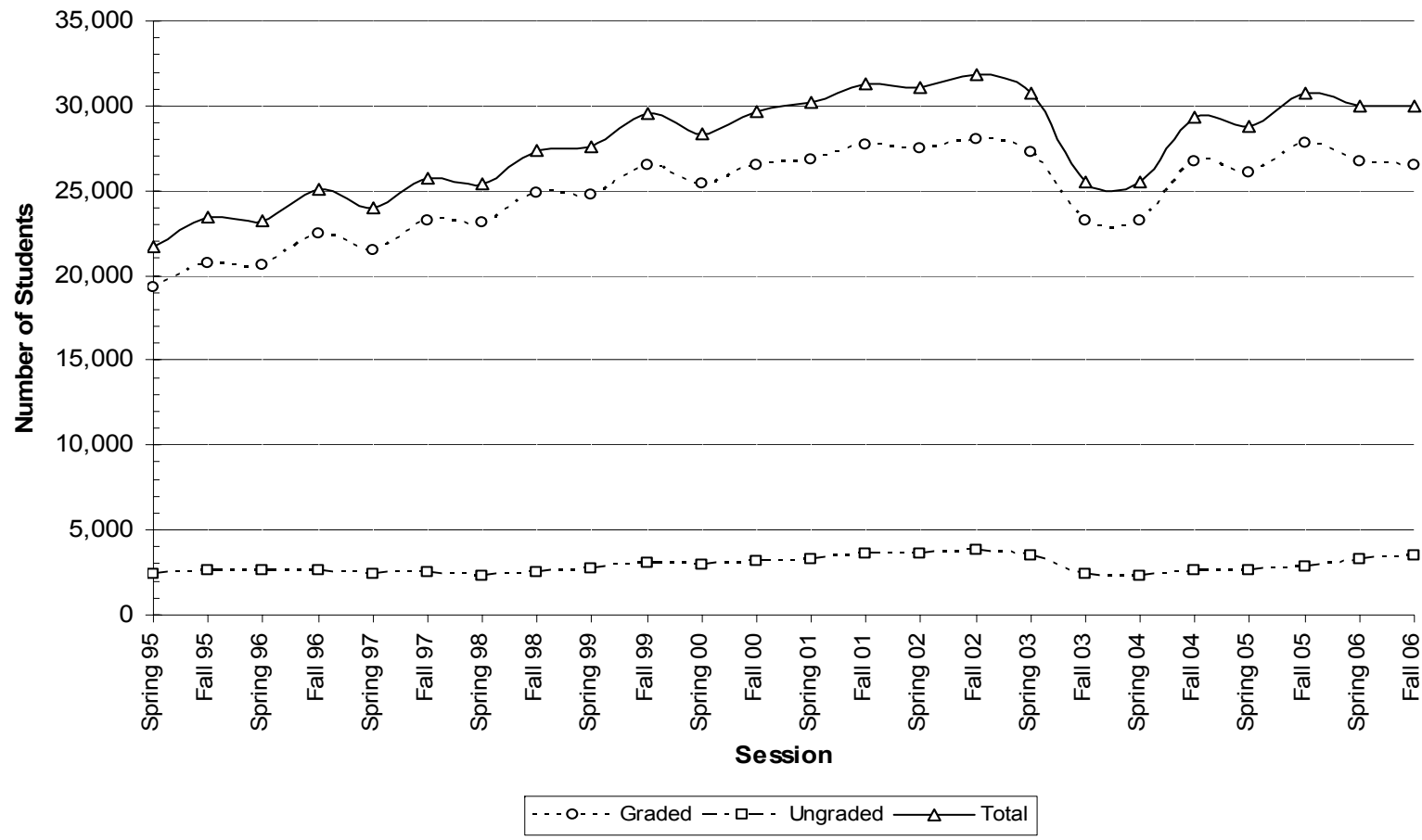


"Swirling"

A 2002 report outlining the future of higher education from the Association of American Colleges and Universities (AAC&U) cited new enrollment patterns--including multiple-institution attendance--as one of the key pressures higher education will face in the 21st century. This enrollment trend is referred to as "swirling."

Source: <http://www.apa.org/monitor/dec03/swirling.html>

3rd WEEK ENROLLMENT: GRADED, UNGRADED, AND TOTAL





Concurrent & Subsequent Enrollment Patterns

 National Student Clearinghouse Data can measure concurrent and subsequent enrollment patterns of students.



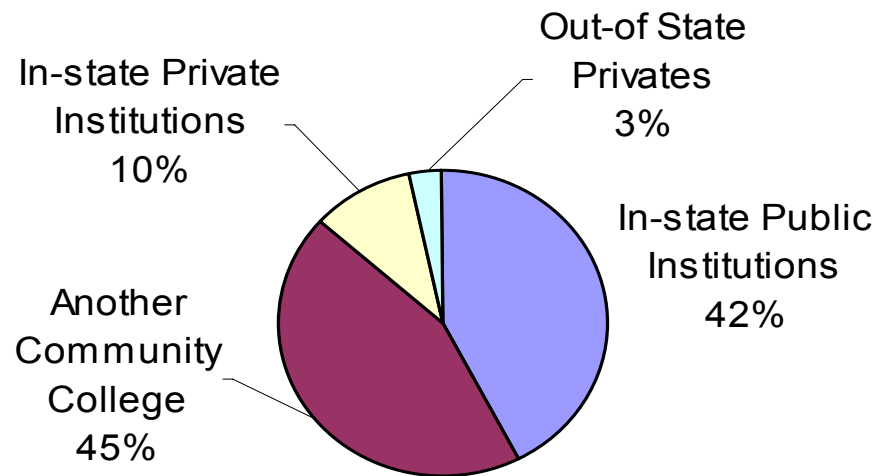
Student Matching Results

- 
- 📁 Files Requested: 65,534
 - 📁 Total Students Found and Included in Aggregate Report: 56,596
 - 📁 Less: Student Level Reporting Blocked by School: 34
 - 📁 Less: Student Level Reporting Blocked by Student: 18,545
 - 📁 Total Students Reported at Detail Level: 38,017
 - 📁 86% of students were matched
 - 📁 Timeline: Spring 2004-Spring 2006

Top 10 Schools for Concurrent/Subsequent Enrollment

SCHOOL NAME	SCHOOL TYPE 2 yr or 4 yr	PUBLIC		% OF TOTAL	NUMBER OF STUDENTS
		PRIVATE	STATE		
UCLA - QRTR	4	Public	CA	10.41%	831
CSU NORTHRIDGE	4	Public	CA	10.41%	831
WEST LOS ANGELES COLLEGE (CC)	2	Public	CA	9.66%	771
EL CAMINO (CC)	2	Public	CA	5.93%	473
UCLA EXTENSION	4	Public	CA	5.41%	432
LOS ANGELES CITY COLLEGE (CC)	2	Public	CA	4.20%	335
U OF SO CALIFORNIA	4	Private	CA	3.50%	279
LOS ANGELES PIERCE COLLEGE (CC)	2	Public	CA	3.47%	277
LOS ANGELES VALLEY COLLEGE (CC)	2	Public	CA	2.48%	198
LOYOLA MARYMOUNT	4	Private	CA	2.39%	191
TOTAL					4618

Subsequent/Concurrent Enrollment





Why are our Students Attending Other Community Colleges?

 Need to Survey Them


 Possible Reasons Include:

 Parking Problems at SMC

 Scheduling Difficulties

 Academic Rigor

 Distance



NSC Match of 2005-2006 Degree Data and Subsequent Enrollment

SCHOOL NAME	# of Students	% of Students	Subsequent Institution
SANTA MONICA	227	36%	SANTA MONICA
U CAL LA - QRTR	111	18%	U CAL LA - QRTR
CSU NORTHRIDGE	91	14%	CSU NORTHRIDGE
CSU LONG BEACH	26	4%	CSU LONG BEACH
U CAL BERKELEY	25	4%	U CAL BERKELEY
CSU DOMINGUEZ	14	2%	CSU DOMINGUEZ
U OF SO CALIFOR	13	2%	U OF SO CALIFOR
U CAL EXTENSION	12	2%	U CAL EXTENSION
U CAL SANTA BAR	11	2%	U CAL SANTA BAR
CSU LOS ANGELES	11	2%	CSU LOS ANGELES

Table 1.2: Persistence Rate

Percentage of first-time students with a minimum of six units earned in a Fall term and who returned and enrolled in the subsequent Fall term anywhere in the system.

	Fall 2002 to Fall 2003	Fall 2003 to Fall 2004	Fall 2004 to Fall 2005
Persistence Rate	68.7%	70.7%	71.6%

Data: DRAFT Data from Chancellor's Office, California Community Colleges

Percentage of first-time students with a minimum of six units earned in a Fall term and who returned and enrolled in the subsequent Fall term at Santa Monica College

	Fall 2002 to Fall 2003	Fall 2003 to Fall 2004	Fall 2004 to Fall 2005
Persistence Rate	68.2%	72.5%	73%

Data: SMC MIS Data Files



Challenges

- ✎ Identifying students who actually transfer rather than co-enroll
- ✎ Rectifying NCS data with CPEC data on transfer numbers
- ✎ Continuing to match the data over time to look for discrepancies in reporting



Uses of the Data

Track Students

 Individual Programs

 Improve Articulation

 Better Understand Enrollment Patterns

 Recruiting and Retention